

Recombinant human Lactate Dehydrogenase B/LDHB protein

Catalog Number: ATGP3387

PRODUCT INFORMATION

Expression system

E.coli

Domain

1-334aa

UniProt No.

P07195

NCBI Accession No.

NP_002291

Alternative Names

Renal carcinoma antigen NY-REN-46, Lactate dehydrogenase B, L-lactate dehydrogenase B chain, LDH-H, LDH-B, LDH heart subunit

PRODUCT SPECIFICATION

Molecular Weight

36.6 kDa (334aa) confirmed by MALDI-TOF

Concentration

1mg/ml (determined by Bradford assay)

Formulation

Liquid in. 20mM Tris-HCl buffer (pH 8.0) containing 10% glycerol, 1mM DTT

Purity

> 90% by SDS-PAGE

Endotoxin level

< 1 EU per 1ug of protein (determined by LAL method)

Biological Activity

Specific activity is > 300unit/mg, in which one unit will convert 1.0 umole of pyruvate to L-lactate and beta-NAD per minute at pH 7.5 at 37C.

Tag

Non-Tagged

Application

SDS-PAGE, Enzyme Activity

Storage Condition

Can be stored at +2C to +8C for 1 week. For long term storage, aliquot and store at -20C to -80C. Avoid repeated freezing and thawing cycles.

Recombinant human Lactate Dehydrogenase B/LDHB protein

Catalog Number: ATGP3387

BACKGROUND

Description

LDHB, also known as L-lactate dehydrogenase B chain isoform LDHB, is a member of the lactate dehydrogenase family. It is an oxidoreductase which catalyses the interconversion of pyruvate and lactate with concomitant interconversion of NADH and NAD⁺. As this protein can also catalyze the oxidation of hydroxybutyrate. The LDH family consists of three members, LDH-A, LDH-B and LDH-C. LDHs function as powerful markers for germ cell tumors. Recombinant human LDHB protein was expressed in *E. coli* and purified by using conventional chromatography techniques.

Amino acid Sequence

MATLKEKLIAPVAEEEEATVPPNNKITVVGVGQVGMACAISI LGKSLADELA LVDVLEDKLGEMMDLQHGS LFLQTPKIVA DKDYSVTANS KIVVVVTAGVR QQEGESRLNL VQRNVNVFKF IIPQIVKYSP DCIIIVVSNP VDILTYVTWK LSGLPKHRVI GSGCNLDSAR FRYLMAEKLGIHPSSCHGWI LGEHGDSSVA VWSGVNVAGV SLQELNPEMG TDNDSSENWKE VHKMIVESAY EVIKLKGVTN WAIGLSVADL IESMLKNLSR IHPVSTMVKG MYGIENEVFL SLPCILNARG LTVINQKLL DDEVAQLKKS ADTLWDIQKD LKDL

General References

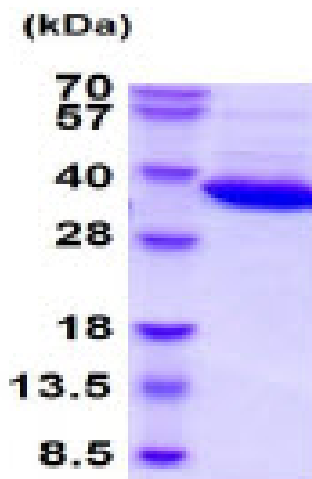
Zhao Z., et al. (2015) *Cancer Lett.* 358(1):17-26.

Martin I., et al. (2014) *Cell.* 157(2):472-85.

DATA

SDS-PAGE

3ug by SDS-PAGE under reducing condition and visualized by coomassie blue stain.



15% SDS-PAGE (3ug)