

Recombinant mouse IL-1 beta/IL1B protein

Catalog Number: ATGP3398

PRODUCT INFORMATION

Expression system

E.coli

Domain

118-269aa

UniProt No.

P10749

NCBI Accession No.

NP_032387

Alternative Names

Interleukin-1 beta, IL-1 beta

PRODUCT SPECIFICATION

Molecular Weight

21 kDa (189aa) confirmed by MALDI-TOF

Concentration

1mg/ml (determined by Bradford assay)

Formulation

Liquid in. 20mM Tris-HCl buffer (pH 8.0) containing 10% glycerol

Purity

> 90% by SDS-PAGE

Endotoxin level

< 1 EU per 1ug of protein (determined by LAL method)

Biological Activity

Measured in a cell proliferation assay using D10.G4.1 mouse helper T cells. The ED50 range ≤ 0.1 ng/ml.

Tag

His-Tag

Application

SDS-PAGE, Bioactivity

Storage Condition

Can be stored at +2C to +8C for 1 week. For long term storage, aliquot and store at -20C to -80C. Avoid repeated freezing and thawing cycles.

BACKGROUND

Description

IL-1beta is an inflammatory cytokine that might modulate angiogenesis by directly interacting with vascular

Recombinant mouse IL-1 beta/IL1B protein

Catalog Number: ATGP3398

endothelial cells or enhancing the production of proangiogenic factors via paracrine control. IL-1beta stimulates endothelial cell migration and proliferation, adhesion-molecule expression, inflammatory mediator production, and leukocyte recruitment. IL-1beta is required for tumor growth, metastasis, and angiogenesis in several animal models. Recombinant mouse IL-1beta, fused to His tag, was expressed in E. coli and purified by using conventional chromatography techniques.

Amino acid Sequence

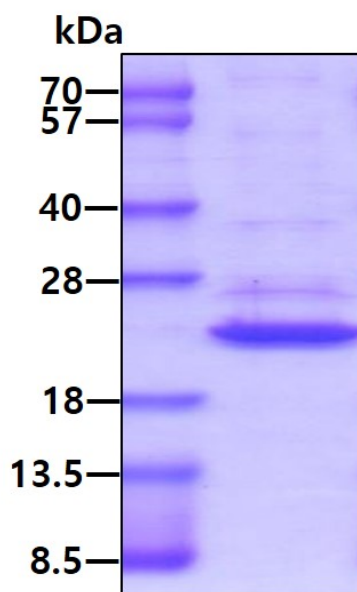
<MRGSHHHHHH GMASMTGGQQ MGRDLYDDDD KDRWGS>MVPI RQLHYRLRDE QKSLVLSDP YELKALHLNG
 QNINQQVIFS MSFVQGEPSN DKIPVALGLK GKNLYLSCVM KDGTPTLQLE SVDPKQYPPK KMEKRFVFNK IEVKSKEFE
 SAEFPNWWYIS TSQAEHKPVF LGNNSGQDII DFTMESVSS

General References

Saijo Y, et al, (2002) J. Immunol. 169:469-475.
 Torisu H, et al, (2000) J. Cancer. 85:182-188.

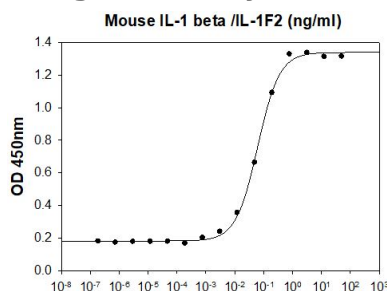
DATA

SDS-PAGE



3ug by SDS-PAGE under reducing condition and visualized by coomassie blue stain.

Biological Activity



Mouse IL-1 beta /IL-1F2 stimulates cell proliferation of the D10.G4.1 mouse helper T cells. The ED50 range ≤ 0.1 ng/ml.