

# Recombinant mouse EphB4 protein

Catalog Number: ATGP3415

## PRODUCT INFORMATION

---

### Expression system

Baculovirus

### Domain

16-539aa

### UniProt No.

P54761

### NCBI Accession No.

NP\_034274

### Alternative Names

EPH receptor B4, Ephrin type-B receptor 4, Developmental kinase 2, mDK-2, Hepatoma transmembrane kinase, Tyrosine kinase MYK-1, Htk, Mdk2, Tyro11

## PRODUCT SPECIFICATION

---

### Molecular Weight

58.7 kDa (532aa)

### Concentration

0.25mg/ml (determined by absorbance at 280nm)

### Formulation

Liquid in. Phosphate-Buffered Saline (pH 7.4) containing 10% glycerol

### Purity

> 85% by SDS-PAGE

### Endotoxin level

< 1 EU per 1ug of protein (determined by LAL method)

### Tag

His-Tag

### Application

SDS-PAGE

### Storage Condition

Can be stored at +2C to +8C for 1 week. For long term storage, aliquot and store at -20C to -80C. Avoid repeated freezing and thawing cycles.

## BACKGROUND

---

### Description

Ephb4, also known as ephrin type-B receptor 4 isoform b, is a member of the Eph receptor tyrosine kinase family shown to act in neuronal guidance and mediate venal/arterial separation. Ephb4 provides survival advantage to squamous cell carcinoma of the head and neck. It has tumor suppressor activities and that regulation of cell

# Recombinant mouse EphB4 protein

Catalog Number: ATGP3415

proliferation, extracellular matrix remodeling, and invasive potential are important mechanisms of tumor suppression. Recombinant mouse Ephb4, fused to His-tag at C-terminus, was expressed in insect cell and purified by using conventional chromatography techniques.

## Amino acid Sequence

LEETLLNTKL ETADLKWVY PQAEGQWEEEL SGLDEEQHSV RTYEVCDMKR PGGQAHWLRT GWVPRRGAVH  
VYATIRFTMM ECLSLPRASR SCKETFTVFY YESEADTATA HTPAWMENPY IKVDTVAAEH LTRKRPGAEA TGKVNKTLR  
LGPLSKAGFY LAFQDQGACM ALLSLHLFYK KCSWLITNLT YFPETVPREL VVPVAGSCVA NAVPTANPSP SLYCREDGQW  
AEQQVTGCSC APGYEAAESN KVCRACGQGT FKPQIGDESC LPCPANSNHSN NIGSPVCLCR IGYRARS DP RSPCTTPPS  
APRSVVHHLN GSTLRLEWSA PLESGGREDL TYAVRCRECR PGGSCLP CGG DMTFDPGPRD LVEPWVAIRG LRPDVITYTFE  
VAALNGVSTL ATGPPPFEPV NVTTDREVPP AVSDIRVTRS SPSSLILSWA IPRAPSGAVL DYEVKYHEKG AEGPSSVRF  
KTSENRAELR GLKRGASYLV QVRARSEAGY GPFQGEHHSQ TQLDESESWR EQLAVEHHHH HH

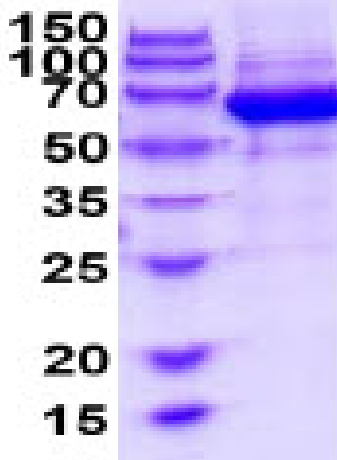
## General References

- Xiao Z. et al., (2012) Cancer Biol Ther. 13:630-637.
- Masood R. et al., (2006) Int J Cancer. 119:1236-1248.
- Doposo H. et al., (2009) Cancer Res. 69:7430-7438.

## DATA

### SDS-PAGE

(kDa)



3ug by SDS-PAGE under reducing condition and visualized by coomassie blue stain.

**15% SDS-PAGE (3ug)**