

Recombinant human CLEC-2/CLEC1B protein

Catalog Number: ATGP3436

PRODUCT INFORMATION

Expression system

Baculovirus

Domain

55-229aa

UniProt No.

Q9P126

NCBI Accession No.

NP_057593

Alternative Names

C-type lectin domain family 1 member B, CLEC2, CLEC-2

PRODUCT SPECIFICATION

Molecular Weight

21.8 kDa (184aa)

Concentration

0.5mg/ml (determined by absorbance at 280nm)

Formulation

Liquid in. Phosphate-Buffered Saline (pH 7.4) containing 10% glycerol

Purity

> 90% by SDS-PAGE

Endotoxin level

< 1 EU per 1ug of protein (determined by LAL method)

Tag

His-Tag

Application

SDS-PAGE

Storage Condition

Can be stored at +2C to +8C for 1 week. For long term storage, aliquot and store at -20C to -80C. Avoid repeated freezing and thawing cycles.

BACKGROUND

Description

CLEC1B, as known as C-type lectin domain family 1 member B, is a type 2 transmembrane glycoprotein and member of the C-type lectin-like family of receptors. This protein is expressed preferentially in liver, and is also detected in myeloid cells, platelets, and megakaryocytes. It has been reported that CLEC2/CLEC1B mediates powerful platelet aggregation by binding to the snake venom protein, rhodocytin and the molecule podoplanin.

Recombinant human CLEC-2/CLEC1B protein

Catalog Number: ATGP3436

Recombinant human CLEC1B, fused to His-tag at C-terminus, was expressed in insect cell and purified by using conventional chromatography techniques.

Amino acid Sequence

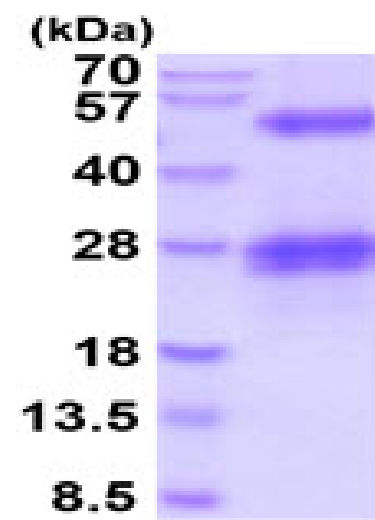
ADPSVMQRNY LQGENENRTG TLQQLAKRFC QYVVKQSELK GTFKGHKCSP CDTNWRYYGD SCYGFFRHNL
TWEESKQYCT DMNATLLKID NRNIVEYIKA RTHLIRWVGL SRQKSNEVWK WEDGSVISEN MFEFLEDGKG NMNCAYFHNG
KMHPTFCENK HYLMCERKAG MTKVDQLPHH HHHH

General References

Chaipan C., et al, (2006) J. Virol. 80:8951-8960.
Colonna M., et al, (2000) Eur. J. Immunol. 30:697-704.

DATA

SDS-PAGE



3ug by SDS-PAGE under reducing condition and visualized by coomassie blue stain.

15% SDS-PAGE (3ug)