

Recombinant mouse Serine protease 28/PRSS28 protein

Catalog Number: ATGP3437

PRODUCT INFORMATION

Expression system

Baculovirus

Domain

27-274aa

UniProt No.

Q924N9

NCBI Accession No.

NP_444489

Alternative Names

Serine protease 28, Prss28, lsp1, mlsp-1

PRODUCT SPECIFICATION

Molecular Weight

28.7 kDa (256aa)

Concentration

0.25mg/ml (determined by absorbance at 280nm)

Formulation

Liquid in. Phosphate-Buffered Saline (pH 7.4) containing 10% glycerol

Purity

> 90% by SDS-PAGE

Endotoxin level

< 1 EU per 1ug of protein (determined by LAL method)

Tag

His-Tag

Application

SDS-PAGE

Storage Condition

Can be stored at +2C to +8C for 1 week. For long term storage, aliquot and store at -20C to -80C. Avoid repeated freezing and thawing cycles.

BACKGROUND

Description

Prss28, also known as serine protease 28, belongs to the S1 serine proteinase family with a conserved Histidine-Aspartic Acid-Serine catalytic triad. It exhibits mixed substrate specificity that silences signaling via proteinase-activated receptors. It is involved with embryo hatching and its activity is important for successful implantation. Recombinant mouse Prss28, fused to His-tag at C-terminus, was expressed in insect cell and purified by using

Recombinant mouse Serine protease 28/PRSS28 protein

Catalog Number: ATGP3437

conventional chromatography techniques.

Amino acid Sequence

KPVGIVGGQC TPPGKWPWQV SLRMYSYEVN SWVHICGCSI IHPQWILTAA HClQSQDADP AVYRVQVGEV YLYKEQELLN
ISRIIHPDY NDVSKRFDLA LMQLTALLVT STNVSPVSLP KDSSTFDSTD QCWLVGWGNL LQRVPLQPPY QLHEVKIPIQ
DNKSCRAYR KKSSDEHKAV AIFDDMLCAG TSGRGPCFGD SGGPLVCWKS NKWlQVGVVS KGIDCSNNLP SIFSRVQSSL
AWIHQHIQLE HHHHHH

General References

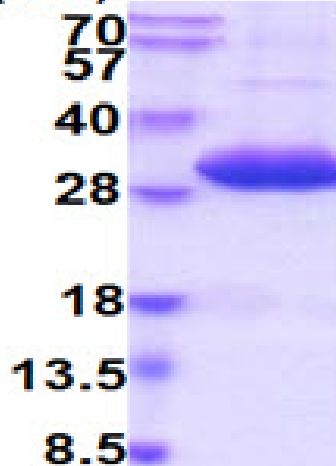
Sharma N., et al. (2006) BMC Dev Biol. 6:61.

Tang L., et al. (2005) Gene. 364:30-36.

DATA

SDS-PAGE

(kDa)



3ug by SDS-PAGE under reducing condition and visualized by coomassie blue stain.

15% SDS-PAGE (3ug)