

Recombinant human CD68 protein

Catalog Number: ATGP3484

PRODUCT INFORMATION

Expression system

Baculovirus

Domain

22-319aa

UniProt No.

P34810

NCBI Accession No.

NP_001242

Alternative Names

SCARD1, Macrosialin isoform A, Macrosialin, LAMP4, GP110, CD68

PRODUCT SPECIFICATION

Molecular Weight

32.6 kDa (307aa)

Concentration

1mg/ml (determined by absorbance at 280nm)

Formulation

Liquid in. Phosphate-Buffered Saline (pH 7.4) containing 10% glycerol

Purity

> 95% by SDS-PAGE

Endotoxin level

< 1 EU per 1ug of protein (determined by LAL method)

Tag

His-Tag

Application

SDS-PAGE

Storage Condition

Can be stored at +2C to +8C for 1 week. For long term storage, aliquot and store at -20C to -80C. Avoid repeated freezing and thawing cycles.

BACKGROUND

Description

CD68, also known as macrosialin, is a member of the lysosomal/endosomal-associated membrane glycoprotein (LAMP) family. It is expressed on monocytes/macrophages. It is found in cytoplasmic granules and in the cytoplasm of various non-hematopoietic tissues including liver and kidney tubules and glomeruli. CD68 is also found on the surface of macrophages, monocytes, neutrophils, basophils and large lymphocytes. Recombinant

Recombinant human CD68 protein

Catalog Number: ATGP3484

human CD68 protein, fused to His-tag at C-terminus, was expressed in insect cell and purified by using conventional chromatography techniques.

Amino acid Sequence

ADPNDCPHKK SATLLPSFTV TPTVTESTGT TSHRRTKSHK TTHRRTTTTG TTSHGPTTAT HNPTTTSHGN VTVHPTSNST
ATSQGPSTAT HSPATTSHGN ATVHPTSNST ATSPGFTSSA HPEPPPPSPS PSPTSKETIG DYTWTNGSQP CVHLQAQIQI
RVMYTTQGGG EAWGISVLNP NKTKVQGSCE GAHPHLLLSF PYGHLSFGFM QDLQQKVYYL SYMAVEYNVS FPHAAQWTFS
AQNASLRDLQ APLGQSFSCS NSSIILSPAV HLDLLSLRLQ AAQLPHTGVF GQSFSCPSDR SHHHHHH

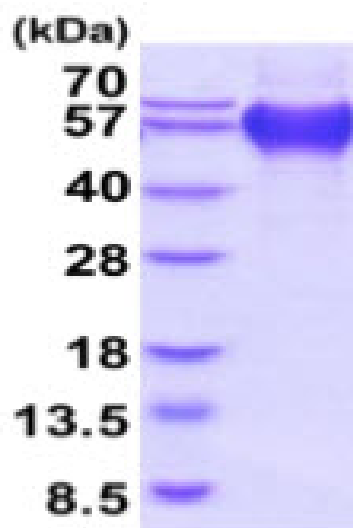
General References

Strobl H. et al., (1995) Br. J. Haematol. 90:774-782.

Ogawa Y. et al., (1995) Pathol. Int. 45:698-701.

DATA

SDS-PAGE



3ug by SDS-PAGE under reducing condition and visualized by coomassie blue stain.

15% SDS-PAGE (3ug)