

Recombinant human SLAM/CD150 protein

Catalog Number: ATGP3522

PRODUCT INFORMATION

Expression system

Baculovirus

Domain

21-237aa

UniProt No.

Q13291

NCBI Accession No.

NP_003028

Alternative Names

Signaling lymphocytic activation molecule family member 1, SLAMF1, SLAM, CD150, CDw150

PRODUCT SPECIFICATION

Molecular Weight

25.3 kDa (226aa)

Concentration

0.5mg/ml (determined by BCA assay)

Formulation

Liquid in. Phosphate-Buffered Saline (pH 7.4) containing 10% glycerol

Purity

> 95% by SDS-PAGE

Endotoxin level

< 1 EU per 1ug of protein (determined by LAL method)

Tag

His-Tag

Application

SDS-PAGE

Storage Condition

Can be stored at +2C to +8C for 1 week. For long term storage, aliquot and store at -20C to -80C. Avoid repeated freezing and thawing cycles.

BACKGROUND

Description

SLAMF1, also known as signaling lymphocytic activation molecule family member 1, is a cell surface sialylated phosphoglycoprotein and belongs to the CD2 subset of the Ig superfamily of type I transmembrane glycoproteins. This protein is constitutively expressed on peripheral blood memory T cells, T-cell clones, immature thymocytes, and a proportion of B cells, and is rapidly induced on naive T cells after activation. High-

Recombinant human SLAM/CD150 protein

Catalog Number: ATGP3522

affinity for self-ligand is important in bidirectional T-cell to B-cell stimulation. Recombinant mouse SLAMF1 protein, fused to His-tag at C-terminus, was expressed in insect cell and purified by using conventional chromatography techniques.

Amino acid Sequence

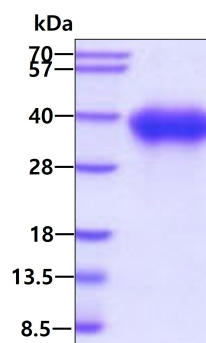
<ADP>ASYGTGG RMMNCPKILR QLGSKVLLPL TYERINKSMN KSIHIVVTMA KLENLSEVENK IVSLDPSEAG PPRYLGDYK
FYLENLTLGI RESRKEDEGW YLMTLEKNVS VQRFCLQLRL YEQVSTPEIK VLNKTQENGT CTLILGCTVE KGDHVAYSWS
EKAGTHPLNP ANSSHLLSLT LGPQHADNIY ICTVSNPISN NSQTFSPWPG CRTDPSETKP <HHHHHH>

General References

Ma C., et al. (2012) J Biol Chem. 287: 18359-18365.
Romanets-Korbut O., et al. (2015) PLoS One. 10: e0118302.

DATA

SDS-PAGE



3ug by SDS-PAGE under reducing condition and visualized by coomassie blue stain.