

Recombinant mouse Enolase 2/ENO2 protein

Catalog Number: ATGP3524

PRODUCT INFORMATION

Expression system

E.coli

Domain

1-434aa

UniProt No.

P17183

NCBI Accession No.

NP_038537

Alternative Names

2-phospho-D-glycerate hydro-lyase, Neural enolase, Neuron-specific enolase

PRODUCT SPECIFICATION

Molecular Weight

49.7 kDa (457aa) confirmed by MALDI-TOF

Concentration

1mg/ml (determined by absorbance at 280nm)

Formulation

Liquid in. Phosphate-Buffered Saline (pH 7.4) containing 10% glycerol

Purity

> 95% by SDS-PAGE

Biological Activity

Specific activity is > 10,000pmol/min/ug, and was obtained by measuring the decrease of NAD in absorbance at 340nm resulting from NADH at pH 6.5 at 37C.

Tag

His-Tag

Application

SDS-PAGE, Enzyme Activity

Storage Condition

Can be stored at +2C to +8C for 1 week. For long term storage, aliquot and store at -20C to -80C. Avoid repeated freezing and thawing cycles.

BACKGROUND

Description

Eno2, also known as Gamma enolase isoform1, is a glycolytic isoenzyme which is located in central and peripheral neurons and neuroendocrine cells. This enzyme is released into the CSF when neural tissue is injured. Neoplasms derived from neural or neuroendocrine tissue may release Eno2 into the blood. Eno2 is a useful

Recombinant mouse Enolase 2/ENO2 protein

Catalog Number: ATGP3524

substance that has been detected in patients with certain tumors, namely: neuroblastoma, small cell lung cancer, medullary thyroid cancer, carcinoid tumors, pancreatic endocrine tumors, and melanoma. Recombinant mouse Eno2 protein, fused to His-tag at N-terminus, was expressed in E. coli and purified by using conventional chromatography techniques.

Amino acid Sequence

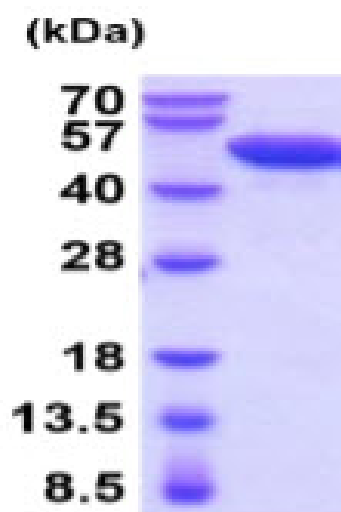
MGSSHHHHHHH SSGLVPRGSH MGSMSEIKIW AREILDSRGN PTVEVDLYTA KGLFRAAVPS GASTGIYEAL ELRDGDKQRY
LGKGVKAVD HINSRIAPAL ISSGISVVEQ EKLDNLMLEL DGTENKSKFG ANAILGVSLA VCKAGAAERD LPLYRHIAQL
AGNSDLILPV PAFNVINGGS HAGNKLAMQE FMILPVGAE FRDAMRLGAE VYHTLKGVIK DKYGKDATNV GDEGGFAPNI
LENSEALELV KEAIDKAGYT EKMVIGMDVA ASEFYRDGKY DLDFKSPADP SRYITGDQLG ALYQDFVRNY PVVSIEDPFD
QDDWAAWSKF TANVGIQIVG DDLTVTNPKR IERAVEEKAC NCLLLKVNQI GSVTEAIQAC KLAQENGWGV MVSHRSGETE
DTFIADLVVG LCTGQIKTGA PCRSERLAKY NQLMRIEEL GDEARFAGHN FRNPSVL

General References

Hafner A., et al. (2013) Aging Cell 12(4):604-14.
Ninomiya S., et al. (2013) Neurosci Res 75(2):121-9.

DATA

SDS-PAGE



3ug by SDS-PAGE under reducing condition and visualized by coomassie blue stain.

15% SDS-PAGE (3ug)