

Recombinant human CD300C protein

Catalog Number: ATGP3537

PRODUCT INFORMATION

Expression system

Baculovirus

Domain

29-183aa

UniProt No.

Q08708

NCBI Accession No.

NP_006669

Alternative Names

LMIR2, LIR, Immunoglobulin superfamily member 16, IGSF16, CMRF35-like molecule 6, CMRF35A1, CMRF35A, CMRF35, CLM-6, CD300LMIR2, CD300C molecule, CD300C, CD300 antigen-like family member C, , ,

PRODUCT SPECIFICATION

Molecular Weight

18kDa (163aa)

Concentration

0.25mg/ml (determined by absorbance at 280nm)

Formulation

Liquid in. Phosphate-Buffered Saline (pH 7.4) containing 10% glycerol

Purity

> 95% by SDS-PAGE

Endotoxin level

< 1 EU per 1ug of protein (determined by LAL method)

Tag

His-Tag

Application

SDS-PAGE

Storage Condition

Can be stored at +2C to +8C for 1 week. For long term storage, aliquot and store at -20C to -80C. Avoid repeated freezing and thawing cycles.

BACKGROUND

Description

CD300C, also known as CMRF35-like molecule 6, is a type I transmembrane glycoprotein that belongs to the immune regulatory signaling (IRS) family of molecules within the immunoglobulin (Ig) superfamily. It is present on the surface of natural killer cells, granulocytes, most myeloid cells, dendritic cells, and a subpopulation of T

Recombinant human CD300C protein

Catalog Number: ATGP3537

and B lymphocytes. This protein regulates a diverse array of cell processes via their triggering and inhibitory receptor functions. Recombinant human CD300c protein, fused to His-tag at C-terminus, was expressed in insect cell and purified by using conventional chromatography techniques.

Amino acid Sequence

MTVAGPVGGS LSVQCRYEKE HRTLNKFWCR PPQILRCDKI VETKGSAGKR NGRVSIRDSP ANLSFTVTLE NLTEEDAGTY
WCGVDTPWLR DFHDPIVEVE VSVFPAGTTT ASSPQSSMGT SGPPTKLPVH TWPSVTRKDS PEPSHPGSL FSNVRLEHHH
HHH

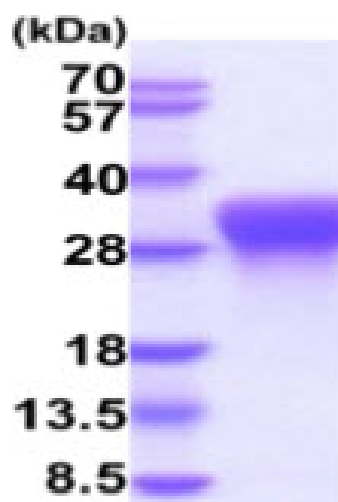
General References

Lankry D., et al. (2010) J Immunol. 185:2877-2886.

Simhadri VR., et al. (2013) J Innate Immun. 5:389-400.

DATA

SDS-PAGE



3ug by SDS-PAGE under reducing condition and visualized by coomassie blue stain.

15% SDS-PAGE (3ug)