

Recombinant canine IL-2 (C147S) protein

Catalog Number: ATGP3544

PRODUCT INFORMATION

Expression system

E.coli

Domain

21-155aa

UniProt No.

Q29416

NCBI Accession No.

NP_001003305

Alternative Names

Interleukin-2, IL-2, T-cell growth factor, TCGF

PRODUCT SPECIFICATION

Molecular Weight

18.1 kDa (160aa) confirmed by MALDI-TOF

Concentration

0.5mg/ml (determined by Bradford assay)

Formulation

Liquid in. Phosphate-Buffered Saline (pH 7.4)

Purity

> 95% by SDS-PAGE

Endotoxin level

< 1 EU per 1ug of protein (determined by LAL method)

Biological Activity

Measured in a cell proliferation assay using CTLL-2 mouse cytotoxic T cells. The ED50 range \leq 0.3ng/ml.

Tag

His-Tag

Application

SDS-PAGE, Bioactivity

Storage Condition

Can be stored at +2C to +8C for 1 week. For long term storage, aliquot and store at -20C to -80C. Avoid repeated freezing and thawing cycles.

BACKGROUND

Description

IL2, also known as Interleukin2, is an immunoregulatory lymphokine produced by T-cell in response to antigenic

Recombinant canine IL-2 (C147S) protein

Catalog Number: ATGP3544

or mitogenic stimulation IL2/IL-2R signaling is required for T-cell proliferation and other fundamental functions which are essential for the immune response. IL2 stimulates growth and differentiation of B-cells, NK cells, lymphokine activated kill cells, monocytes, macrophages and oligodendrocytes. Recombinant canine IL2 protein was expressed in E. coli and purified by using conventional chromatography techniques.

Amino acid Sequence

<MGSSHHHHHH SSGLVPRGSH MGSHM>APITS SSTKETEQQM EQLLLDLQLL LNGVNNYENP QLSRMLTFKF
YTPKKATEFT HLQCLAEELK NLEEVGLPQ SKNVHLTDTK ELISNMNVTLL KCLKGSETSY NCEYDDETAT ITEFLNKWIT
FSQSIFSTLT

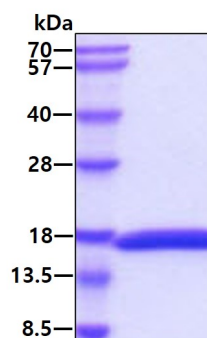
General References

Nedoszytko B., et al. (2016) Postepy Dermatol Alergol. 33(6): 429-434.

Michael HT., et al. (2013) Vet Immunol Immunopathol. 155(3): 211-7.

DATA

SDS-PAGE



3µg by SDS-PAGE under reducing condition and visualized by coomassie blue stain.

Biological Activity

Canine IL-2 stimulates cell cytotoxicity in the CTLL-2 mouse cytotoxic T cell. The ED50 range ≤ 0.3 ng/ml.

