

Recombinant human 2B4/CD244 protein

Catalog Number: ATGP3552

PRODUCT INFORMATION

Expression system

Baculovirus

Domain

19-224aa

UniProt No.

Q9BZW8

NCBI Accession No.

NP_057466.1

Alternative Names

CD244 molecule natural killer cell receptor 2B4, NAIL, NKR2B4, Nmrk, SLAMF4

PRODUCT SPECIFICATION

Molecular Weight

50.2 kDa (448aa)

Concentration

1mg/ml (determined by absorbance at 280nm)

Formulation

Liquid in. Phosphate-Buffered Saline (pH 7.4) containing 10% glycerol

Purity

> 90% by SDS-PAGE

Endotoxin level

< 1 EU per 1ug of protein (determined by LAL method)

Biological Activity

Measured by its binding ability in a functional ELISA with Human CD48/SLAMF2 (CAT# ATGP3642). The ED50 range \leq 0.1 ug/ml.

Tag

hIgG-His-Tag

Application

SDS-PAGE, Bioactivity

Storage Condition

Can be stored at +2C to +8C for 1 week. For long term storage, aliquot and store at -20C to -80C. Avoid repeated freezing and thawing cycles.

BACKGROUND

Recombinant human 2B4/CD244 protein

Catalog Number: ATGP3552

Description

CD244, also known as natural killer cell receptor 2B4 isoform 1, is a natural killer and T cell immunoglobulin superfamily surface protein and ligand of CD48. It is a cell surface glycoprotein related to CD2 and implicated in the regulation of natural killer and T lymphocyte function. It is expressed on all human NK cells, a subpopulation of T cells, basophils and monocytes. It activates NK cell mediated cytotoxicity, induces secretion of IFN-gamma and matrix metalloproteinases, and NK cell invasiveness. Recombinant human CD244, fused to hlgG-His-tag at C-terminus, was expressed in insect cell and purified by using conventional chromatography techniques.

Amino acid Sequence

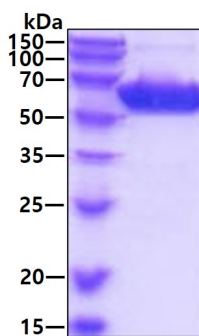
```
<ADL>GKGCQGS ADHVVSISGV PLQLQPNSIQ TKVDSIAWKK LLPSQNGFHH ILKWENGLP SNTSNDRFSF IVKNLSLLIK
AAQQQDSGLY CLEVTSISGK VQTATFQVFV FDKVEKPR LQ GQGKILDRGR CQVALSCLVS RDGNVSYAWY RGSKLIQTAG
NLTYLDEEVD INGTHTYTCN VSNPVSWE SH TLNLTQDCQN AHQEFRFWP<L EPKSCDKTHT CPPCPAPELL GGPSVFLFPP
KPKDTLMISR TPEVTCVVVD VSHEDPEVKF N WYVDGVEVH NAKTKPREEQ YNSTYRVVSV LTVLHQDWLN GKEYKCKVSN
KALPAPIEKT ISKAKGQPRE PQVYTLPPSR DELTKNQVSL TCLVKGFYPS DIAVEWESNG QPENNYK TTP PVLDS DGSFF
LYSKLTVDKS RWQQGNVFSC SVMHEALH NH YTQKSLSLSP GKHHHHHH>
```

General References

Brown MH., et al. (1998) J Exp Med. 188:2083-2090.
 Chuang SS., et al. (2001) J Immunol. 167:6210-6216.

DATA

SDS-PAGE



3ug by SDS-PAGE under reducing condition and visualized by coomassie blue stain

Biological Activity

Human CD48/SLAMF2 (CAT# ATGP3642) is coated at 2 ug/ml (100 ul/well) can bind Human CD244. The ED50 range \leq 0.1 ug/ml.

