

# Recombinant human TSPAN7 protein

Catalog Number: ATGP3554

## PRODUCT INFORMATION

---

### Expression system

Baculovirus

### Domain

113-213aa

### UniProt No.

P41732

### NCBI Accession No.

NP\_004606

### Alternative Names

Tetraspanin-7, TSPAN7, A15, CCG-B7, CD231, DXS1692E, MRX58, MXS1, TALLA-1, TM4SF2, TM4SF2b

## PRODUCT SPECIFICATION

---

### Molecular Weight

12.6 kDa (110aa)

### Concentration

0.5mg/ml (determined by absorbance at 280nm)

### Formulation

Liquid in. Phosphate-Buffered Saline (pH 7.4) containing 10% glycerol

### Purity

> 90% by SDS-PAGE

### Endotoxin level

< 1 EU per 1ug of protein (determined by LAL method)

### Tag

His-Tag

### Application

SDS-PAGE

### Storage Condition

Can be stored at +2C to +8C for 1 week. For long term storage, aliquot and store at -20C to -80C. Avoid repeated freezing and thawing cycles.

## BACKGROUND

---

### Description

TSPAN7, as known as tetraspanin-7, is a member of the transmembrane 4 superfamily, also known as the tetraspanin family. Most of these proteins mediate signal transduction events that play a role in the regulation of cell development, activation, growth and motility. Also, it is associated with X-linked mental retardation and neuropsychiatric diseases such as Huntington's chorea, fragile X syndrome and myotonic dystrophy. More

## Recombinant human TSPAN7 protein

Catalog Number: ATGP3554

recently, it has been identified as a key immune system target in type 1 diabetes. Recombinant human TSPAN7, fused to His-tag at C-terminus, was expressed in insect cell and purified by using conventional chromatography techniques.

### Amino acid Sequence

<ADP>RHEIKDT FLRTYTDAMQ TYNGNDERSR AVDHVQRSL S CCGVQNYTNW STSPYFLEHG IPPSCCMNET  
DCNPQDLHNL TVAATKVNQK GCYDLVTSFM ETNM<HHHHHH>

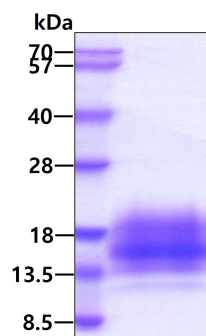
### General References

Wuttig D., et al, (2012) Int. J. Cancer 131:e693-704.

Bassani S., et al, (2012) Neuron 73:1143-1158.

## DATA

### SDS-PAGE



3ug by SDS-PAGE under reducing condition and visualized by coomassie blue stain.