

Recombinant human 14-3-3 beta/alpha protein

Catalog Number: ATGP3590

PRODUCT INFORMATION

Expression system

E.coli

Domain

1-246aa

UniProt No.

P31946

NCBI Accession No.

NP_003395

Alternative Names

YWHAB, YWHAA, Tyrosine 3-monooxygenase/tryptophan 5-monooxygenase activation protein beta/alpha, Protein 1054, Protein kinase C inhibitor protein 1, KCIP-1, 14-3-3 protein beta/alpha N-terminally processed, GW128, HEL-S-1, HS1, KCIP-1

PRODUCT SPECIFICATION

Molecular Weight

30.6 kDa (270aa) confirmed by MALDI-TOF

Concentration

1mg/ml (determined by absorbance at 280nm)

Formulation

Liquid in. Phosphate-Buffered Saline (pH 7.4) containing 10% glycerol

Purity

> 90% by SDS-PAGE

Tag

His-Tag

Application

SDS-PAGE

Storage Condition

Can be stored at +2C to +8C for 1 week. For long term storage, aliquot and store at -20C to -80C. Avoid repeated freezing and thawing cycles.

BACKGROUND

Description

YWHAB, also known as 14-3-3 protein beta/alpha, is 14-3-3 family plays a key regulatory role in signal transduction, checkpoint control, apoptotic and nutrient-sensing pathways. 14-3-3 proteins are highly conserved and ubiquitously expressed. There are at least seven isoforms, beta, gamma, epsilon, sigma, zeta, tau and eta that have been identified in mammals. The 14-3-3 beta, a subtype of the 14-3-3 proteins, was found in B Cells,

Recombinant human 14-3-3 beta/alpha protein

Catalog Number: ATGP3590

brain and liver etc. This 14-3-3 beta has been shown to interact with RAF1 and CDC25 phosphatases, suggesting that it may play a role in linking mitogenic signaling and the cell cycle machinery. Recombinant human YWHAB, fused to His-tag at N-terminus, was expressed in *E. coli* and purified by using conventional chromatography techniques.

Amino acid Sequence

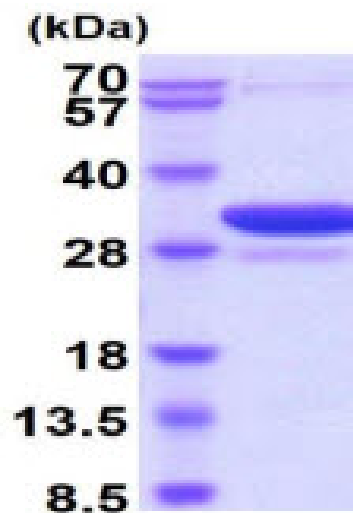
MGSSHHHHHH SGLVPRGSH MGSHTMDKS ELVQKAKLAE QAERYDDMAA AMKAVTEQGH ELSNEERNLL
SVAYKNVVG A RRSSWRVISS IEQKTERNEK KQQMGKEYRE KIAELQDIC NDVLELLDKY LIPNATQPES KVFYLMKMGD
YFRYLSEVAS GDNKQTTVSN SQQAYQEAFE ISKKEMQPTH PIRLGLALNF SVFYEILNS PEKACSLAKT AFDEAIAELD
TLNEESYKDS TLIMQLLRDN LTLWTSENQG DEGDAGEGEN

General References

Rodriguez LG., et al. (2005) *J Cell Physiol.* 202(1):285-94.
Mils V., et al. (2000) *Oncogene.* 19(10):1257-65.

DATA

SDS-PAGE



3ug by SDS-PAGE under reducing condition and visualized by coomassie blue stain.

15% SDS-PAGE (3ug)