

Recombinant human CD301/CLEC10A protein

Catalog Number: ATGP3591

PRODUCT INFORMATION

Expression system

Baculovirus

Domain

61-292aa

UniProt No.

Q8IUN9

NCBI Accession No.

NP_006335

Alternative Names

C-type lectin domain family 10 member A isoform 2, CLEC10A, CD301, CLECSF13, CLECSF14, HML, HML2, MGL, Macrophage lectin 2

PRODUCT SPECIFICATION

Molecular Weight

27.3 kDa (241aa)

Concentration

0.5mg/ml (determined by absorbance at 280nm)

Formulation

Liquid in. Phosphate-Buffered Saline (pH 7.4)

Purity

> 90% by SDS-PAGE

Endotoxin level

< 1 EU per 1ug of protein (determined by LAL method)

Tag

His-Tag

Application

SDS-PAGE

Storage Condition

Can be stored at +2C to +8C for 1 week. For long term storage, aliquot and store at -20C to -80C. Avoid repeated freezing and thawing cycles.

BACKGROUND

Description

CLEC10A, also known as C-type lectin domain family 10 member A isoform 2, is a C-type lectin superfamily member 14. It is expressed on immature myeloid dendritic cells and alternatively activated macrophages. This protein roles in regulating adaptive and innate immune responses. Also, it binds in a calcium-dependent manner

Recombinant human CD301/CLEC10A protein

Catalog Number: ATGP3591

to terminal galactose and N-acetylgalactosamine, linked to serine or threonine. Recombinant human CLEC10A, fused to His-tag at C-terminus, was expressed in insect cell and purified by using conventional chromatography techniques.

Amino acid Sequence

<ADP>QNSKFQR DLVTLRRTDFS NFTSNTVAEI QALTSQGSLL EETIASLKAE VEGFKQERQA VHSEMLLRVQ QLVQDLKCLT
CQVATLNNNG EEASTEGTCC PVNWVEHQDS CYWFSHSGMS WAEAKEYCQL KNAHLVVINS REEQNFVQKY
LGSAYTWMGL SDPEGAWKWV DGTDYATGFQ NWKPGQPDDW QGHGLGGGED CAHFHPDGRW NDDVCQRPYH
WVCEAGLGQT SQES<HHHHHH H>

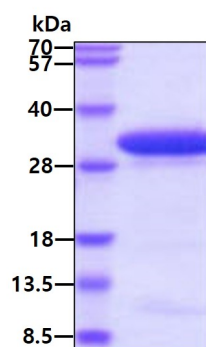
General References

Lenos K., et al, (2015) Oncotarget 6:26278-26290.

Zizzari IG., et al, (2015) PLoS ONE 10:E0132617.

DATA

SDS-PAGE



3ug by SDS-PAGE under reducing condition and visualized by coomassie blue stain