

Recombinant human L1CAM protein

Catalog Number: ATGP3618

PRODUCT INFORMATION

Expression system

Baculovirus

Domain

20-1115aa

UniProt No.

P32004

NCBI Accession No.

NP_001137435

Alternative Names

Neural cell adhesion molecule L1 isoform 3, L1CAM, CAML1, CD171, HSAS, HSAS1, MASA, MIC5, N-CAM-L1, N-CAML1, NCAM-L1, S10, SPG1

PRODUCT SPECIFICATION

Molecular Weight

123.6 kDa (1104aa)

Concentration

0.25mg/ml (determined by absorbance at 280nm)

Formulation

Liquid in. Phosphate-Buffered Saline (pH 7.4) containing 10% glycerol

Purity

> 90% by SDS-PAGE

Endotoxin level

< 1 EU per 1ug of protein (determined by LAL method)

Tag

His-Tag

Application

SDS-PAGE

Storage Condition

Can be stored at +2C to +8C for 1 week. For long term storage, aliquot and store at -20C to -80C. Avoid repeated freezing and thawing cycles.

BACKGROUND

Description

L1CAM, also known as neural cell adhesion molecule L1 isoform 3, is a cell adhesion receptor of the immunoglobulin superfamily, known for its roles in nerve cell function. It is now recognized to play a key role in cell migration, adhesion, neurite outgrowth, myelination and neuronal differentiation. Overexpression of L1CAM

Recombinant human L1CAM protein

Catalog Number: ATGP3618

in normal and cancer cells increased motility, enhanced growth rate and promoted cell transformation and tumorigenicity. Recombinant human L1CAM, fused to His-tag at C-terminus, was expressed in insect cell and purified by using conventional chromatography techniques.

Amino acid Sequence

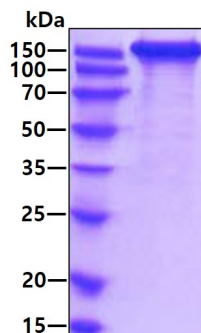
IQIPEELMEP PVITEQSPRR LVVFPTDDIS LKCEASGKPE VQFRWTRDGV HFKPKEELGV TVYQSPHSGS FTITGNNSNF
 AQRFGIYRC FASNKLG TAM SHEIRLMAEG APKWPKETVK PVEVEEGESV VLPCNPPPSA EPLRIYWMNS KILHIKQDER
 VTMGQNGNLY FANVLTSNDH SDYICAHFP GTRTIIQKEP IDLRVKATNS MIDRKPRLLF PTNSSSHLVA LQGQPLVLEC
 IAEGFPTPTI KWL RPSGPMP ADRVTYQNHN KTLQLLK VGE EDDGEYRCLA ENSLGSARHA YYVTVEAAPY WLHKPQSHLY
 GPGETARLDC QVQGRPOPEV TWRINGIPVE ELAKDQKYRI QRGALILSNV QPSDTMVTQC EARNRHGLLL ANAYIYVVQL
 PAKILTADNQ TYMAVQGSTA YLLCKAFGAP VPSVQWLDED GTTVLQDERF FPYANGTLGI RDLQANDTGR YFCLAANDQN
 NVTIMANLKV KDATQITQGP RSTIEKKGSR VTFTCQASFD PSLQPSITWR GDGRDLQELG DSDKYFIEDG RLVHSLDYS
 DQGNYS CVAS TELDVVESRA QLLVVGSPGP VPRVLVSLDH LLTQSQVRVS WSPAEDHNAP IEKYDIEFED KEMAPEKWYS
 LGKVPGNQTS TTLKLSPIYVH YTFRVTAINK YGPGESPVS ETVVTPEAAP EKNPVDVKGE GNETTNM VIT WKPLRWMDWN
 APQVQYRVQW RPQGTRGPWQ EQIVSDPFLV VSNTSTFVPI EIKVQAVNSQ GKGPEPQVTI GYSGEDYPQA IPELEGIEIL
 NSSAVLVKWR PVDLAQVKGH LRGYNVTYWR EGSQRKHSKR HIHKDHVVVP ANTTSVILSG LRPYSSYHLE VQAFNGRGS
 PASEFTFSTP EGVPGHPEAL HLECQSNTSL LLRWQPPLSH NGVLTGYVLS YHPLDEGGKG QLSFNLRDPE LRTHNLTDLS
 PHLRYRFQLQ ATTKEGPGEA IVREGGTMAL SGISDFGNIS ATAGENYSVV SWVPKEGQCN FRFHILFKAL GEEKGGASLS
 PQYVSYNQSS YTQWDLQPD T DYEIHLFKER MFRHQMAVKT NGTGRVRLPP AGFATE<LEHH HHHH>

General References

Maness, P.F., et al. (2007) *Nat. Neurosci.* 10:19-26.
 Gavert, N., et al. (2008) *Expert Opin Biol Ther.* 8(11):1749-57.

DATA

SDS-PAGE



3ug by SDS-PAGE under reducing condition and visualized by coomassie blue stain