

# Recombinant human PD-L1/B7-H1 protein

Catalog Number: ATGP3631

## PRODUCT INFORMATION

---

### Expression system

Baculovirus

### Domain

19-238aa

### UniProt No.

Q9NZQ7

### NCBI Accession No.

NP\_054862.1

### Alternative Names

Programmed cell death 1 ligand 1 isoform, CD274, B7-H, B7H1, PD-L1, PDCD1L1, PDCD1LG1, PDL1

## PRODUCT SPECIFICATION

---

### Molecular Weight

52.5 kDa (462aa)

### Concentration

1mg/ml (determined by absorbance at 280nm)

### Formulation

Liquid in. Phosphate-Buffered Saline (pH 7.4) containing 10% glycerol

### Purity

> 95% by SDS-PAGE

### Endotoxin level

< 1 EU per 1ug of protein (determined by LAL method)

### Biological Activity

Measured by its binding ability in a functional ELISA with Human PD-1 (CAT# ATGP4027). The ED50 range  $\leq$  0.5 ug/ml.

### Tag

hIgG-His-Tag

### Application

SDS-PAGE, Bioactivity

### Storage Condition

Can be stored at +2C to +8C for 1 week. For long term storage, aliquot and store at -20C to -80C. Avoid repeated freezing and thawing cycles.

## BACKGROUND

---

# Recombinant human PD-L1/B7-H1 protein

Catalog Number: ATGP3631

## Description

CD274, also known as programmed cell death 1 ligand 1 isoform, is a member of the growing B7 family of immune molecules. This protein is involved in the regulation of cellular and humoral immune responses. It suppresses T cell activation and proliferation and induces the apoptosis of activated T cells. Also, it plays a role in the development of immune tolerance by promoting T cell anergy and enhancing regulatory T cell development. Recombinant human CD274, fused to hlgG-His-tag at C-terminus, was expressed in insect cell and purified by using conventional chromatography techniques.

## Amino acid Sequence

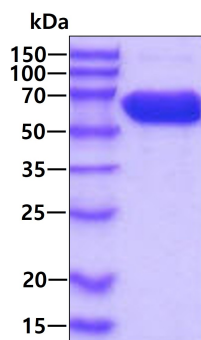
<ADL>FTVTVPK DLYVVEYGSN MTIECKFPVE KQLDLAALIV YWEMEDKNII QFVHGEEEDLK VQHSSYRQRA RLLKDQLSLG  
 NAALQITDVK LQDAGVYRCM ISYGGADYKR ITVKVNAPYN KINQRILVVD PVTSEHELTC QAEGYPKAEV IWTSSDHQVL  
 SGKTTTTNSK REEKLFNVTS TLRINTTTNE IFYCTFRRLD PEENHTAELV IPELPLAHP NER<LEPKSCD KTHTCPPCPA  
 PELLGGPSVF LFPPKPKDTL MISRTPEVTC VVVDVSHEDP EVKFNWYVDG VEVHNAKTKP REEQYNSTYR VVSVLTVLHQ  
 DWLNGKEYKC KVSNKALPAP IEKTISKAKG QPREPQVYTL PPSRDELTKN QVSLTCLVKG FYPSDIAVEW ESNGQPENNY  
 KTTTPVLDSG GSFFLYSKLT VDKSRWQQGN VFSCSVMEHA LHNHYTQKSL SLSPGKHHHH HH>

## General References

Dong H., et al, (1999) Nat. Med. 5:1365-1369.  
 Trabattoni D., et al, (2003) Blood 101:2514-2520.

## DATA

### SDS-PAGE



3ug by SDS-PAGE under reducing condition and visualized by coomassie blue stain.

### Biological Activity

Human PD-1 (CAT# ATGP4027) is coated at 5 ug/ml (100 ul/well) can bind Human PD-L1. The ED50 range  $\leq$  0.5 ug/ml.

