

# Recombinant human N-Cadherin/CDH2 protein

Catalog Number: ATGP3634

## PRODUCT INFORMATION

---

### Expression system

Baculovirus

### Domain

160-724aa

### UniProt No.

P19022

### NCBI Accession No.

NP\_001783

### Alternative Names

Cadherin-2 isoform 1, CDH2, CD325, CDHN, CDw325, NCAD, Neural cadherin

## PRODUCT SPECIFICATION

---

### Molecular Weight

62.9 kDa (574aa)

### Concentration

0.5mg/ml (determined by absorbance at 280nm)

### Formulation

Liquid in. Phosphate-Buffered Saline (pH 7.4) containing 20% glycerol

### Purity

> 90% by SDS-PAGE

### Endotoxin level

< 1 EU per 1ug of protein (determined by LAL method)

### Tag

His-Tag

### Application

SDS-PAGE

### Storage Condition

Can be stored at +2C to +8C for 1 week. For long term storage, aliquot and store at -20C to -80C. Avoid repeated freezing and thawing cycles.

## BACKGROUND

---

### Description

CDH2, also known as cadherin-2 isoform 1, is a transmembrane, homophilic glycoprotein belonging to the calcium-dependent cell adhesion molecule family. It plays a role in neurons and later was found to also play a role in cardiac muscle and in cancer metastasis. Its loss promotes tumorigenesis by releasing membrane-bound B-catenin, hence stimulating Wnt signaling. It seems to be involved in tumor development, but this finding is

# Recombinant human N-Cadherin/CDH2 protein

Catalog Number: ATGP3634

limited in adrenocortical tumors (ACTs). Recombinant human CDH2, fused to His-tag at C-terminus, was expressed in insect cell and purified by using conventional chromatography techniques.

## Amino acid Sequence

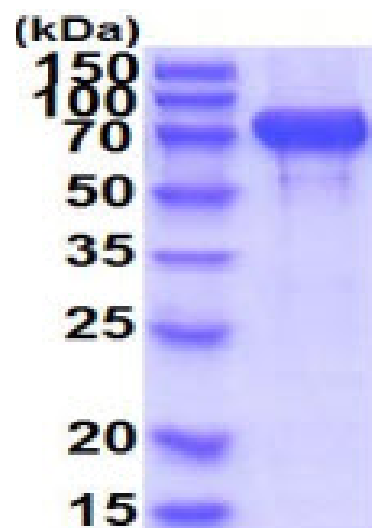
ADPDWVIPP I NLPENSRGPF PQELVRIRSD RDKNLSLRYS VTGPGADQPP TGFIINPIS GQLSVTKPLD REQIARFHLR  
AHAVDINGNQ VENPIDIVIN VIDMNDNRPE FLHQVWNGTV PEGSKPGTYV MTVTAIDADD PNALNGMLRY RIVSQAPSTP  
SPNMFTINNE TGDII TVAAG LDREKVQQYT LIIQATDMEG NPTYGLSNTA TAVITVTDVN DNPPEFTAMT FYGEVPENRV  
DIIVANLTVT DKDQPHTPAW NAVYRISGGD PTGRFAIQTD PNSNDGLVTV VKPIDFETNR MFVLTAAEN QVPLAKGIQH  
PPQSTATVSV TVIDVNENPY FAPNPKIIRQ EEGLHAGTML TTFTAQDPDR YMQQNIRYTK LSDPANWLKI DPVNGQITTI  
AVLDRESPNV KNNIYNATFL ASDNGIPPMS GTGTLQIYLL DINDNAPQVL PQEAETCETP DPNSINITAL DYDIDPNAGP  
FAFDLPLSPV TIKRNWTTIR LNGDFAQLNL KIKFLEAGIY EVPIIITDSG NPPKSNISIL RVKVCQCDN GDCTDVDRIV  
GAGLGTGAHH HHHH

## General References

Buxton RS., et al. (1992) *Semin Cell Biol.* 3:157-167.  
Rubin B., et al. (2016) *Tumour Biol.* 37:13545-13555.

## DATA

### SDS-PAGE



3ug by SDS-PAGE under reducing condition and visualized by coomassie blue stain.

15% SDS-PAGE (3ug)