

Recombinant human SLAMF2/CD48 protein

Catalog Number: ATGP3642

PRODUCT INFORMATION

Expression system

Baculovirus

Domain

27-220aa

UniProt No.

P09326

NCBI Accession No.

NP_001769.2

Alternative Names

B-cell membrane protein, B-lymphocyte activation marker BLAST-1, BCM1 surface antigen, Leukocyte antigen MEM-102, SLAM family member 2, Signaling lymphocytic activation molecule 2, TCT.1

PRODUCT SPECIFICATION

Molecular Weight

23.4 kDa (203aa)

Concentration

1mg/ml (determined by absorbance at 280nm)

Formulation

Liquid in. Phosphate-Buffered Saline (pH 7.4) containing 10% glycerol

Purity

> 90% by SDS-PAGE

Endotoxin level

< 1 EU per 1ug of protein (determined by LAL method)

Biological Activity

Measured by its binding ability in a functional ELISA with Human CD244 (CAT# ATGP3552)

Tag

His-Tag

Application

SDS-PAGE, Bioactivity

Storage Condition

Can be stored at +2C to +8C for 1 week. For long term storage, aliquot and store at -20C to -80C. Avoid repeated freezing and thawing cycles.

BACKGROUND

Recombinant human SLAMF2/CD48 protein

Catalog Number: ATGP3642

Description

CD48, also known as CD48 antigen isoform 1, is a GPI-linked protein in the CD2 family of immunoglobulin superfamily molecules. This protein is competent to transduce signals and can also trigger signaling through CD2 or 2B4. CD48-CD2 interactions promote T cell activation and class switching to IgG2a in B cells. High affinity CD48-2B4 interactions can either promote or inhibit NK cell and cytotoxic T cell (CTL) activation. It expressed on NK cells is coactivating, whereas CD48 expressed on other cell types inhibits NK cell activation. Recombinant human CD48, fused to His-tag at C-terminus, was expressed in insect cell and purified by using conventional chromatography techniques.

Amino acid Sequence

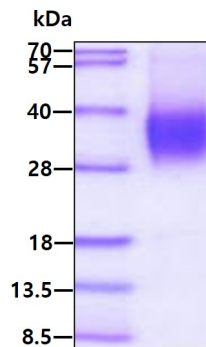
<ADP>QGHLVHM TVVSGSNVTL NISESLPENY KQLTWFYTFD QKIVEWDSRK SKYFESKFKG RVRLDPQSGA LYISKVQKED NSTYIMRVLK KTGNEQEWKI KLQVLDVVPK PVIKIEKIED MDDNCYLKLS CVIPGESVNY TWYGDKRPFK KELQNSVLET TLMPHNYSRC YTCQVSNSVS SKNGTVCLSP PCTLARS<HHH HHH>

General References

Kis-Toth K., et al, (2014) J. Immunol. 192:4436-4442.
Fisher RC., et al, (1991) Mol. Cell. Biol. 11:1614-1623.

DATA

SDS-PAGE



3ug by SDS-PAGE under reducing condition and visualized by coomassie blue stain.

Biological Activity

Human CD48/SLAMF2 is coated at 2 ug/ml (100 ul/well) can bind Human CD244 (CAT# ATGP3552) in a Functional ELISA assay.

