

Recombinant mouse Lactate Dehydrogenase B/LDHB protein

Catalog Number: ATGP3643

PRODUCT INFORMATION

Expression system

E.coli

Domain

1-334aa

UniProt No.

P16125

NCBI Accession No.

NP_032518

Alternative Names

L-lactate dehydrogenase B chain isoform Ldhb, A1790582, H-Ldh, Ldh-2, LDH-B, LDH-H, Ldh2, LDH heart subunit

PRODUCT SPECIFICATION

Molecular Weight

39 kDa (357aa) confirmed by MALDI-TOF

Concentration

1mg/ml (determined by absorbance at 280nm)

Formulation

Liquid in. 20mM Tris-HCl buffer (pH 8.0) containing 1mM DTT, 10% glycerol

Purity

> 95% by SDS-PAGE

Endotoxin level

< 1 EU per 1ug of protein (determined by LAL method)

Biological Activity

Specific activity is > 150unit/mg, in which one unit will convert 1.0 umole of pyruvate to L-lactate and beta-NAD per minute at pH 7.5.

Tag

His-Tag

Application

SDS-PAGE, Enzyme Activity

Storage Condition

Can be stored at +2C to +8C for 1 week. For long term storage, aliquot and store at -20C to -80C. Avoid repeated freezing and thawing cycles.

BACKGROUND

Recombinant mouse Lactate Dehydrogenase B/LDHB protein

Catalog Number: ATGP3643

Description

Ldhb, also known as L-lactate dehydrogenase B chain isoform Ldhb, is a member of the lactate dehydrogenase family. It is an oxidoreductase which catalyses the interconversion of pyruvate and lactate with concomitant interconversion of NADH and NAD+. As this protein can also catalyze the oxidation of hydroxybutyrate, it is occasionally called Hydroxybutyrate Dehydrogenase (HBD). The LDH family consists of three members, LDH-A, LDH-B and LDH-C. LDHs function as powerful markers for germ cell tumors. Recombinant mouse Ldhb protein, fused to His-tagging at N-terminus, was expressed in E. coli and purified by using conventional chromatography techniques.

Amino acid Sequence

MGSSHHHHHH SSSLVPRGSH MGSMATLKEK LIASVADDEA AVPNNKITVV GVGQVGMACA ISILGKSLAD ELALVDVLED
 KLGEMMDLQ HGSLFLQTPK IVADKDYSVT ANSKIVVTA GVRQQEGESR LNLVQRNVNV FKFIIPQIVK YSPDCTIIVV
 SNPVDILTYV TWKLSGLPKH RVIGSGCNLD SARFRYLMAE KLGHPSSCH GWILGEHGDS SVAVWSGVNV AGVSLQELNP
 EMGTDNDSSEN WKEVHKMVDV SAYEVIKLGK YTNWAIGLSV ADLIESMLKN LSRIHPVSTM VKGMYGIENE VFSLPCILN
 ARGLTSVINQ KKKDDEVAQL RKSADTLWDI QKDLKDL

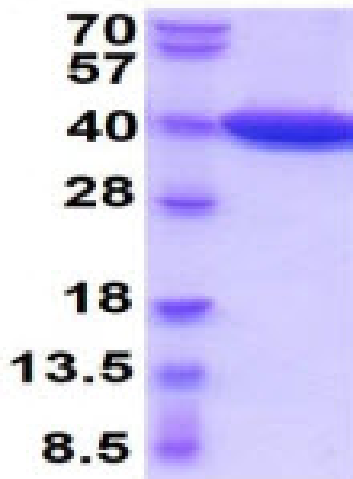
General References

Read JA., et al. (2001) Proteins. 43(2):175-85.
 Butt AA., et al. (2002) AIDS Read. 12(7):317-21

DATA

SDS-PAGE

(kDa)



3ug by SDS-PAGE under reducing condition and visualized by coomassie blue stain.

15% SDS-PAGE (3ug)