

Recombinant human SH2D1B protein

Catalog Number: ATGP3657

PRODUCT INFORMATION

Expression system

Baculovirus

Domain

1-132aa

UniProt No.

O14796

NCBI Accession No.

NP_444512.2

Alternative Names

SH2 domain-containing protein 1B, SH2D1B, EAT2

PRODUCT SPECIFICATION

Molecular Weight

16.4 kDa (141aa)

Concentration

0.25mg/ml (determined by absorbance at 280nm)

Formulation

Liquid in. Phosphate-Buffered Saline (pH 7.4) containing 20% glycerol

Purity

> 90% by SDS-PAGE

Endotoxin level

< 1 EU per 1ug of protein (determined by LAL method)

Tag

His-Tag

Application

SDS-PAGE

Storage Condition

Can be stored at +2C to +8C for 1 week. For long term storage, aliquot and store at -20C to -80C. Avoid repeated freezing and thawing cycles.

BACKGROUND

Description

SH2D1B, also known as SH2 domain-containing protein 1B, is one of the proteins which activate NK cells. It plays a role in controlling signal transduction through at least four receptors, CD84, SLAMF1, LY9 and CD244, expressed on the surface of professional antigen-presenting cells. Two isoforms of the human protein are produced by alternative splicing. Recombinant human SH2D1B protein, fused to His-tag at C-terminus, was

Recombinant human SH2D1B protein

Catalog Number: ATGP3657

expressed in insect cell and purified by using conventional chromatography techniques.

Amino acid Sequence

<ADP>MDLPYYH GRLTKQDCET LLLKEGVDGN FLLRDSSESIP GVLCLCVSFK NIVYTYRIFR EKHGYYRIQT AEGSPKQVFP
SLKELISKFE KPNQGMVVHL LKPIKRTSPS LRWRGLKLEL ETFVNSNSDY VDVLP<HHHHH H>

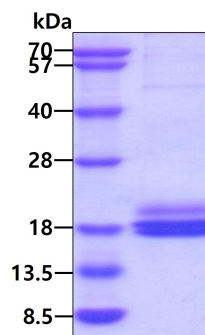
General References

Perez-Quintero LA., et al, (2014) J Exp Med. 211:727-742.

Aldhamen YA., et al, (2012) J Immunol. 189:1349-1359.

DATA

SDS-PAGE



3ug by SDS-PAGE under reducing condition and visualized by coomassie blue stain.