

Recombinant human IL-15R alpha/IL15RA protein

Catalog Number: ATGP3672

PRODUCT INFORMATION

Expression system

Baculovirus

Domain

31-205aa

UniProt No.

Q13261

NCBI Accession No.

NP_002180

Alternative Names

Interleukin-15 receptor subunit alpha isoform 1, IL15RA, CD215, IL-15 receptor subunit alpha

PRODUCT SPECIFICATION

Molecular Weight

45.6 kDa (417aa)

Concentration

0.5mg/ml (determined by absorbance at 280nm)

Formulation

Liquid in. Phosphate-Buffered Saline (pH 7.4) containing 10% glycerol

Purity

> 90% by SDS-PAGE

Endotoxin level

< 1 EU per 1ug of protein (determined by LAL method)

Biological Activity

Measured by its ability to inhibit proliferation using CTLL2 mouse cytotoxic T cells. The ED50 for this effect is ≤ 2 ng/ml with Human IL-15.

Tag

hIgG-His-Tag

Application

SDS-PAGE, Bioactivity

Storage Condition

Can be stored at +2C to +8C for 1 week. For long term storage, aliquot and store at -20C to -80C. Avoid repeated freezing and thawing cycles.

BACKGROUND

Recombinant human IL-15R alpha/IL15RA protein

Catalog Number: ATGP3672

Description

IL15RA, also known as interleukin-15 receptor subunit alpha isoform 1, is a high-affinity receptor for interleukin-15. It associates as a heterotrimer with the IL-2 receptor beta and gamma subunits to initiate signal transduction. This protein can signal both in cis and trans where IL15R from one subset of cells presents IL15 to neighboring IL2RG-expressing cells. IL15/IL15R alpha complexes can transmit reverse signaling that promotes cellular adhesion, tyrosine phosphorylation of intracellular proteins, and cytokine secretion by the IL 15/IL15R alpha expressing cells. Recombinant human IL15RA protein, fused to hIgG-His-tag at C-terminus, was expressed in insect cell and purified by using conventional chromatography techniques.

Amino acid Sequence

<ADP>ITCPPPM SVEHADIWVK SYSLYSRERY ICNSGFKRKA GTSSLTECVL NKATNVAHW TTPSLKCIRDP ALVHQRAPP STVTAGVTP QPESLSPSGK EPAASSPSSN NTAATTAIV PGSQLMPSKS PSTGTTEISS HESSHGTPSQ TTAKNWELTA SASHQPPGVY PQGHSDDT<LE PKSCDKTHTC PPCAPELLG GPSVFLFPPK PKDTLMISRT PEVTCVVVDV SHEDPEVKFN WYVDGVEVHN AKTKPREEQY NSTYRVVSVL TVLHQDWLNG KEYKCKVSNK ALPAPIEKTI SKAKGQPREP QVYTLPPSRD ELTKNQVSLT CLVKGFYPSD IAVEWESNGQ PENNYKTPP VLDSGDGFLL YSKLTVDKSR WQQGNVFCSS VMHEALHNHY TQKLSLSLSPG KHHHHHH>

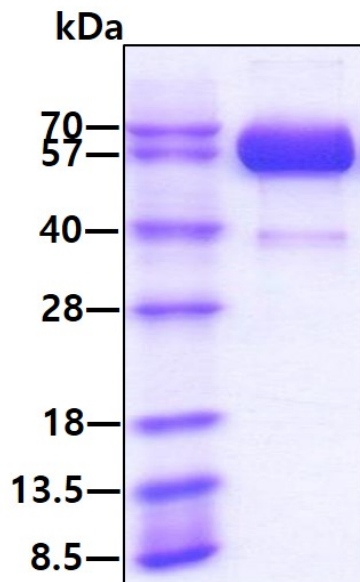
General References

Epardaud M., et al, (2008) Cancer Res. 68:2972-2983.
 Stoklasek TA., et al, (2006) J Immunol. 177:6072-6080.

DATA

SDS-PAGE

3ug by SDS-PAGE under reducing condition and visualized by coomassie blue stain.



Biological Activity

Recombinant human IL-15R alpha/IL15RA protein

Catalog Number: ATGP3672

Human IL-15 R alpha inhibits Human IL-15 induced cell proliferation in the CTLL2 mouse cytotoxic T cells. The ED50 range ≤ 2 ng/ml

