

Recombinant human L-Selectin/CD62L protein

Catalog Number: ATGP3674

PRODUCT INFORMATION

Expression system

Baculovirus

Domain

52-345aa

UniProt No.

P14151

NCBI Accession No.

NP_000646

Alternative Names

L-selectin, CD62 antigen-like family member L, Leukocyte adhesion molecule 1, LAM-1, Leukocyte surface antigen Leu-8, Leukocyte-endothelial cell adhesion molecule 1, LECAM1, Lymph node homing receptor, TQ1, gp90-MEL, CD62L, SELL, LNHR, LYAM1

PRODUCT SPECIFICATION

Molecular Weight

34.1 kDa (303aa)

Concentration

0.25mg/ml (determined by absorbance at 280nm)

Formulation

Liquid in. Phosphate-Buffered Saline (pH 7.4) containing 10% glycerol

Purity

> 90% by SDS-PAGE

Endotoxin level

< 1 EU per 1ug of protein (determined by LAL method)

Tag

His-Tag

Application

SDS-PAGE

Storage Condition

Can be stored at +2C to +8C for 1 week. For long term storage, aliquot and store at -20C to -80C. Avoid repeated freezing and thawing cycles.

BACKGROUND

Description

SELL, also known as L-selectin, is a cell surface component that is a member of a family of adhesion/homing receptors that play important roles in lymphocyte-endothelial cell interactions. This protein mediated

Recombinant human L-Selectin/CD62L protein

Catalog Number: ATGP3674

lymphocyte recirculation is required for maintaining the appropriate tissue distribution of lymphocyte subpopulations including naive and effector subsets such as regulatory T cells. Importantly, this protein has been shown to have both adhesive and signaling functions during leukocyte migration. Recombinant human SELL, fused to His-tag at C-terminus, was expressed in insect cell and purified by using conventional chromatography techniques.

Amino acid Sequence

<ADP>WTYHYSE KPMNWQRARR FCRDNYTDLV AIQNKAIEIY LEKTLPFERS YYWIGIRKIG GIWTWVGTKN
SLTEEAENWG DGEPNKKK EDCVEIYIKR NKDAGKWDD ACHKLKAALC YTASCQPWSC SGHGECVEII NNYTCNCDVG
YYGPQCQFVI QCEPLEAPEL GTMDCTHPLG NFSFSSQCAF SCSEGTNLTG IEETTCGPFG NWSSPEPTCQ VIQCEPLSAP
DLGIMNCSHP LASFSFTSAC TFICSEGTEL IGKKTICES SGIWSNPSP I CQKLDKSFMS I KEGDY<NHHH HHH>

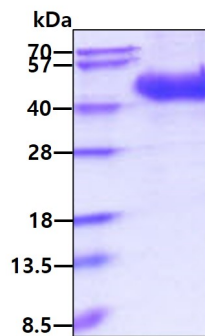
General References

Smalley DM., et al. (2005) J Cell Mol Med. 9:255-266.

Kohn LA., et al. (2012) Nat. Immunol. 13:963-971.

DATA

SDS-PAGE



3ug by SDS-PAGE under reducing condition and visualized by coomassie blue stain.