

Recombinant mouse SF20/MYDGF protein

Catalog Number: ATGP3689

PRODUCT INFORMATION

Expression system

E.coli

Domain

25-166aa

UniProt No.

Q9CPT4

NCBI Accession No.

NP_543027

Alternative Names

Myeloid-derived growth factor, D17Wsu104e, Il25, Ly6elg

PRODUCT SPECIFICATION

Molecular Weight

18.1 kDa (165aa) Confirmed by MALDI-TOF

Concentration

0.5mg/ml (determined by absorbance at 280nm)

Formulation

Liquid in. 20mM Tris-HCl buffer (pH 8.0) containing 0.1M NaCl, 10% glycerol

Purity

> 95% by SDS-PAGE

Tag

His-Tag

Application

SDS-PAGE

Storage Condition

Can be stored at +2C to +8C for 1 week. For long term storage, aliquot and store at -20C to -80C. Avoid repeated freezing and thawing cycles.

BACKGROUND

Description

Mydgm, also known as Myeloid-derived growth factor, is a bone marrow-derived monocyte and paracrine-acting protein that promotes cardiac myocyte survival and adaptive angiogenesis for cardiac protection and repair after myocardial infarction. It stimulates endothelial cell proliferation through a MAPK1/3-, STAT3- and CCND1-mediated signaling pathway. Mydgm-deficient mice develop larger infarct scars and more severe contractile dysfunction compared to wild-type mice. Recombinant mouse Mydgm, fused to His-tag at N-terminus, was expressed in E. coli and purified by using conventional chromatography techniques.

Recombinant mouse SF20/MYDGF protein

Catalog Number: ATGP3689

Amino acid Sequence

<MGSSHHHHH SSGLVPRGSH MGS>VSEPTTV PFDVRPGGVV HSFSQDVGPG NKFTCTFTYA SQGGTNEQWQ
MSLGTSEDSQ HFTCTIWRPQ GKSYLEFTQF KAELRGAEIE YAMAYSKAAF ERESDVPLKS EEFVTKTAV SHRPGAFKAE
LSKLVIVAKA ARSEL

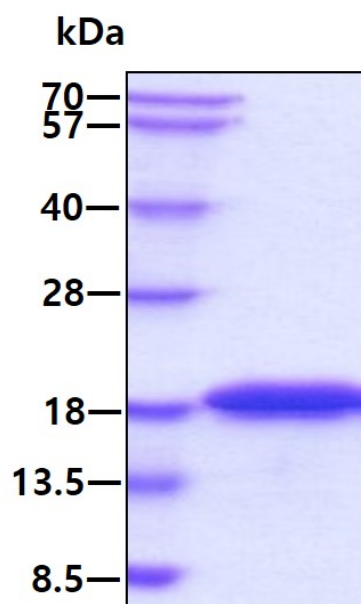
General References

Korf-Klingebiel M., et al. (2015) Nat Med. 21(2):140-9

Weiler T., et al. (2007) Arthritis Res Ther. 9(2):R30.

DATA

SDS-PAGE



3ug by SDS-PAGE under reducing condition and visualized by coomassie blue stain.