

# Recombinant human CD58/LFA-3 protein

Catalog Number: ATGP3693

## PRODUCT INFORMATION

---

### Expression system

Baculovirus

### Domain

29-215aa

### UniProt No.

P19256

### NCBI Accession No.

NP\_001770

### Alternative Names

Lymphocyte function-associated antigen 3 isoform 1, CD58, ag3, LFA-3, LFA3

## PRODUCT SPECIFICATION

---

### Molecular Weight

22.5 kDa (196aa)

### Concentration

1mg/ml (determined by absorbance at 280nm)

### Formulation

Liquid in. Phosphate-Buffered Saline (pH 7.4) containing 10% glycerol

### Purity

> 95% by SDS-PAGE

### Endotoxin level

< 1 EU per 1ug of protein (determined by LAL method)

### Tag

His-Tag

### Application

SDS-PAGE

### Storage Condition

Can be stored at +2C to +8C for 1 week. For long term storage, aliquot and store at -20C to -80C. Avoid repeated freezing and thawing cycles.

## BACKGROUND

---

### Description

CD58, also known as lymphocyte function-associated antigen 3 isoform 1, is a cell adhesion molecule expressed on Antigen Presenting Cells (APC), particularly macrophages. It binds to CD2 (LFA-2) on T cells and is important in strengthening the adhesion between the T cells and Professional Antigen Presenting Cells. It is an important regulator of immune cell function which occurs as both surface-associated and soluble forms. It is associated

# Recombinant human CD58/LFA-3 protein

Catalog Number: ATGP3693

with increased risk for multiple sclerosis. Recombinant human CD58, fused to His-tag at C-terminus, was expressed in insect cell and purified by using conventional chromatography techniques.

## Amino acid Sequence

ADPFSQQIYG VVYGNVTFHV PSNVPLKEVL WKKQKDKVAE LENSEFRAFS SFKNRVYLDT VSGSLTIYNL TSSDEDEYEM  
ESPNITDTMK FFLYVLES LP SPTLTALTN GSIEVQCMIP EHYNSHRGLI MYSWDCPMEQ CKRNSTSIYF KMENDLPQKI  
QCTLSNPLFN TTSSILTTC IPSSGHSRHR HHHHHH

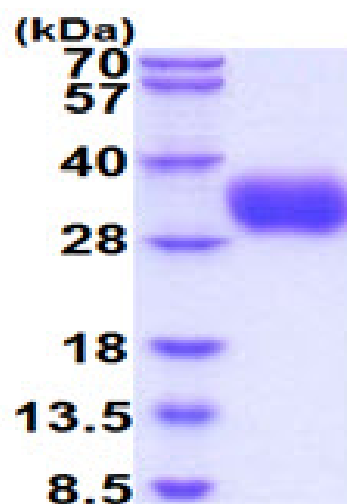
## General References

Abdul Razak FR., et al. (2016) Genes Immun. 17:363-366.

Kirby AC., et al. (2000) Cell Adhes Commun. 7:453-464.

## DATA

### SDS-PAGE



3ug by SDS-PAGE under reducing condition and visualized by coomassie blue stain.

-----  
15% SDS-PAGE (3ug)