

Recombinant human GM-CSF R alpha protein

Catalog Number: ATGP3697

PRODUCT INFORMATION

Expression system

Baculovirus

Domain

20-320aa

UniProt No.

P15509

NCBI Accession No.

NP_001155003

Alternative Names

Granulocyte-macrophage colony-stimulating factor receptor subunit alpha isoform g, CSF2RA, CD116, CDw116, CSF2R, CSF2RAX, CSF2RAY, CSF2RX, CSF2RY, GM-CSF-R-alpha, GMCSFR, GMR, SMDP4, alphaGMR

PRODUCT SPECIFICATION

Molecular Weight

35.9 kDa (310aa)

Concentration

0.5mg/ml (determined by absorbance at 280nm)

Formulation

Liquid in. Phosphate-Buffered Saline (pH 7.4) containing 10% glycerol

Purity

> 90% by SDS-PAGE

Endotoxin level

< 1 EU per 1ug of protein (determined by LAL method)

Biological Activity

Measured by its ability to inhibit proliferation using TF-1 human erythroleukemic cells. The ED50 range $\leq 10\mu\text{g/ml}$ with Human GM-CSF.

Tag

His-Tag

Application

SDS-PAGE, Bioactivity

Storage Condition

Can be stored at +2C to +8C for 1 week. For long term storage, aliquot and store at -20C to -80C. Avoid repeated freezing and thawing cycles.

Recombinant human GM-CSF R alpha protein

Catalog Number: ATGP3697

BACKGROUND

Description

CSF2RA, also known as granulocyte-macrophage colony-stimulating factor receptor subunit alpha isoform g, is a well-known hemopoietic growth factor that is used in the clinic to correct neutropenia, usually as a result of chemotherapy. It is a key regulatory molecule causative of this aortopathy, and modulation of this cytokine might be an exploitable treatment strategy for the condition. It transduces a signal that results in the proliferation, differentiation, and functional activation of hematopoietic cells. Recombinant human CSF2RA, fused to His-tag at C-terminus, was expressed in insect cell and purified by using conventional chromatography techniques.

Amino acid Sequence

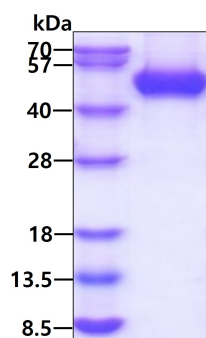
<ADP>LIPEKSD LRTVAPASSL NVRFDSRTMN LSWDCQENTT FSKCFLTDKK NRVVEPRLSN NECSCTFREI CLHEGVTFEV HVNTSQRGFQ QKLLYPNSGR EGTAQAQNFSC FIYNADLMNC TWARGPTAPR DVQYFLYIRN SKRRREIRCP YYIQDSGTHV GCHLDNLSGL TSRNYFLVNG TSREIGIQFF DSLLDTKKIE RFNPPSNVTV RCNTHHCLVR WKQPRTYQKL SYLDFQYQLD VHRKNTQPGT ENLLINVSGD LENRYNFPSS EPRAKHSVKI RAADVRLNLW SSWSEAIEFG SDDG<HHHHHH>

General References

Van Nieuwenhuijze A., et al. (2013) Mol Immunol. 56:675-682.
 Raines MA., et al. (1991) Proc Natl Acad Sci U S A. 88:8203-8207.

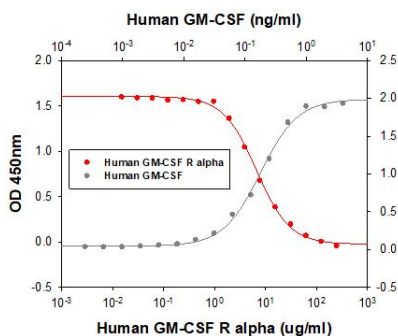
DATA

SDS-PAGE



3ug by SDS-PAGE under reducing condition and visualized by coomassie blue stain.

Biological Activity



Measured by its ability to inhibit proliferation using TF-1 human erythroleukemic cells. The ED50 range ≤ 10 ug/ml with Human GM-CSF.