

Recombinant mouse Glutaredoxin 1/GLRX1 protein

Catalog Number: ATGP3698

PRODUCT INFORMATION

Expression system

E.coli

Domain

1-107aa

UniProt No.

Q9QUH0

NCBI Accession No.

NP_444338

Alternative Names

Glutaredoxin-1, C86710, D13Wsu156e, Glrx1, Grx1, Ttase, Thioltransferase-1

PRODUCT SPECIFICATION

Molecular Weight

14.3 kDa (130aa) confirmed by MALDI-TOF

Concentration

0.5mg/ml (determined by BCA assay)

Formulation

Liquid in. 20mM MES buffer (pH 5.0) containing 20% glycerol, 0.1M NaCl

Purity

> 95% by SDS-PAGE

Tag

His-Tag

Application

SDS-PAGE

Storage Condition

Can be stored at +2C to +8C for 1 week. For long term storage, aliquot and store at -20C to -80C. Avoid repeated freezing and thawing cycles.

BACKGROUND

Description

Glrx, also known as glutaredoxin-1, is member of the thiol-disulfide oxidoreductase family. Glutaredoxin catalyzes the reversible reduction of protein-glutathionyl mixed disulfides to free sulfhydryl groups through a monothiol mechanism. Mammalian Glutaredoxin is known to have two isoforms, GRX1 and GRX2. GRX1 is a cytosolic protein, whereas GRX2 is localized both in the mitochondria and nucleus. Glrx may be involved in various cellular events such as signal transduction, stress response, and metabolic regulation by regulating the redox status of cellular proteins. Recombinant mouse Glrx protein was expressed in E. coli and purified by using

Recombinant mouse Glutaredoxin 1/GLRX1 protein

Catalog Number: ATGP3698

conventional chromatography techniques.

Amino acid Sequence

MGSSHHHHHH SSSLVPRGSH MGSMAQEFVN CKIQSGKVVV FIKPTCPYCR KTQEILSQLP FKQGLLEFVD ITATNNTSAI
QDYLQQLTGA RTVPRVFIGK DCIGGCSDLI SMQQTGELMT RLKQIGALQL

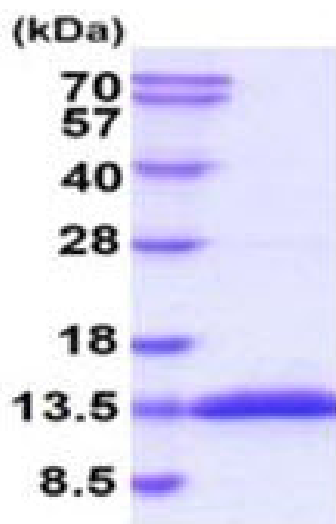
General References

Reynaert NL., et al. (2006) Proc Natl Acad Sci U S A. 103(35):13086-91.

Kanda M., et al. (2006) J Biol Chem. 281(39):28518-28.

DATA

SDS-PAGE



3ug by SDS-PAGE under reducing condition and visualized by coomassie blue stain.

15% SDS-PAGE (3ug)