

Recombinant human Chromogranin A/CHGA protein

Catalog Number: ATGP3728

PRODUCT INFORMATION

Expression system

Baculovirus

Domain

19-457aa

UniProt No.

P10645

NCBI Accession No.

NP_001266.1

Alternative Names

Cga, Pituitary secretory protein I, SP-I, Vasostatin-1, Vasostatin-2, EA-92, ES-43, Pancreastatin, parastatin, PHE5, PHES, SS-18, WA-8, WE-14, LF-19, Catestatin 2, SL21, AL-11, GV-19, GR-44, ER-37, GE-25, Serpinin-RRG, Serpinin, p-Glu serpinin precursor

PRODUCT SPECIFICATION

Molecular Weight

50kDa (448aa)

Concentration

0.25mg/ml (determined by absorbance at 280nm)

Formulation

Liquid in. Phosphate-Buffered Saline (pH 7.4) containing 20% glycerol, 0.1mM PMSF

Purity

> 85% by SDS-PAGE

Endotoxin level

< 1 EU per 1ug of protein (determined by LAL method)

Tag

His-Tag

Application

SDS-PAGE

Storage Condition

Can be stored at +2C to +8C for 1 week. For long term storage, aliquot and store at -20C to -80C. Avoid repeated freezing and thawing cycles.

BACKGROUND

Description

CHGA, also known as chromogranin-A isoform 1 preproprotein, is a member of neuroendocrine secretory proteins of the chromogranin / secretogranin family. It is a precursor of several functional peptides including

Recombinant human Chromogranin A/CHGA protein

Catalog Number: ATGP3728

vasostatin-1, vasostatin-2, pancreastatin, catestatin and parastatin. This peptide negatively regulates the neuroendocrine function of autocrine or nearby cells (paracrine). This protein induces and promotes the production of secretory granules containing insulin in pancreatic islet beta cells. Recombinant human CHGA, fused to His-tag at C-terminus, was expressed in insect cell and purified by using conventional chromatography techniques.

Amino acid Sequence

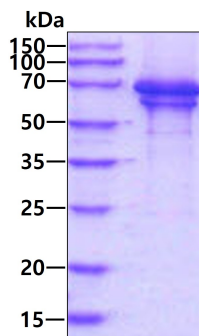
<ADL>LPVNSPM NKGDTVEVMKC IVEVISDTLS KPSPMPVSQE CFETLRGDER ILSILRHQNL LKELQDLALQ GAKERAHQQK KHSGFEDELS EVLENQSSQA ELKEAVEEPS SKDVMKRED SKEAEKSGEA TDGARPQALP EPMQESKAEG NNQAPGEEEE EEEEATNTHP PASLPSQKYP GPQAEGDSEG LSQGLVDREK GLSAEPGWQA KREEEEEEEE EAEAGEEAVP EEEGPTVVLN PHPSLGYKEI RKGESRSEAL AVDGAGKPGA EEAQDPEGKG EQEHSQQKEE EEEMAVVPQG LFRGGKSGEL EQEEERLSKE WEDSKRWSKM DQLAKELTAE KRLEGQEEEE DNRDSSMKLS FRARAYGFRG PGPQLRRGWR PSSREDSLEA GLPLQVRGYP EEKKEEEGSA NRRPEDQELE SLSAIEAELE KVAHQLQALR RG<HHHHHH>

General References

Nikoopour E., et al. (2011) J Immunol. 186:3831-3835.
Stadinski BD., et al. (2010) Nat Immunol. 11:225-231.

DATA

SDS-PAGE



3ug by SDS-PAGE under reducing condition and visualized by coomassie blue stain