

Recombinant human CD3 zeta/CD247 protein

Catalog Number: ATGP3754

PRODUCT INFORMATION

Expression system

Baculovirus

Domain

52-164aa

UniProt No.

P20963

NCBI Accession No.

NP_932170.1

Alternative Names

TCRZ, T-cell surface glycoprotein CD3 zeta chain isoform 1, T3Z, IMD25, CD3-ZETA, CD3Z, CD3Q, CD3H, CD247

PRODUCT SPECIFICATION

Molecular Weight

14.1 kDa (122aa)

Concentration

0.2mg/ml (determined by absorbance at 280nm)

Formulation

Liquid in. 20mM Tris-HCl buffer (pH 6.8) containing 50% glycerol, 1mM DTT, 1mM EDTA, 0.1M NaCl

Purity

> 90% by SDS-PAGE

Endotoxin level

< 1 EU per 1ug of protein (determined by LAL method)

Tag

His-Tag

Application

SDS-PAGE

Storage Condition

Can be stored at +2C to +8C for 1 week. For long term storage, aliquot and store at -20C to -80C. Avoid repeated freezing and thawing cycles.

BACKGROUND

Description

CD247, also known as T-cell surface glycoprotein CD3 zeta chain isoform 1, belongs to CD3Z / FCER1G family. The T cell receptor Zeta together, with alpha / beta and gamma / delta heterodimers. This Protein plays an important role in binding antigen recognition to multiple intracellular signaling pathways and also plays a role in assembly and expression of the TCR complex. Defects in CD247 defects can cause immune deficiencies.

Recombinant human CD3 zeta/CD247 protein

Catalog Number: ATGP3754

Immune deficiency, characterized by T cells, impaired immune responses to allogeneic antigens, tetanus toxoid and mitogen. Recombinant human CD247, fused to His-tag at C-terminus, was expressed in insect cell and purified by using conventional chromatography techniques.

Amino acid Sequence

<ADP>RVKFSRS ADAPAYQQGQ NQLYNELNLG RREEYDVLDK RRGRDPEMGG KPQRRKNPQE GLYNELQKDK MAEAYSEIGM KGERRRGKGH DGLYQGLSTA TKD TYDALHM QALPPR<HHHH HH>

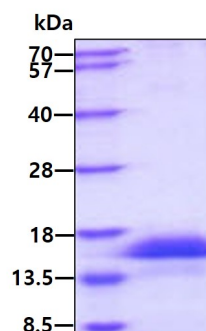
General References

Tomita K., et al. (2001) J. Biol. Chem. 276:25378-25385.

Li R., et al. (2012) Lupus. 21:75-83.

DATA

SDS-PAGE



3ug by SDS-PAGE under reducing condition and visualized by coomassie blue stain.