

# Recombinant mouse Prolactin protein

Catalog Number: ATGP3777

## PRODUCT INFORMATION

---

### Expression system

E.coli

### Domain

30-228aa

### UniProt No.

Q9CPQ2

### NCBI Accession No.

NP\_035294

### Alternative Names

Prolactin isoform 1, AV290867, Gha1, Prl1a1, Growth hormone a1

## PRODUCT SPECIFICATION

---

### Molecular Weight

25 kDa (222aa) Confirmed by MALDI-TOF

### Concentration

0.25mg/ml (determined by Bradford assay)

### Formulation

Liquid in. Phosphate-Buffered Saline (pH 7.4) containing 20% glycerol

### Purity

> 90% by SDS-PAGE

### Endotoxin level

< 1 EU per 1ug of protein (determined by LAL method)

### Tag

His-Tag

### Application

SDS-PAGE

### Storage Condition

Can be stored at +2C to +8C for 1 week. For long term storage, aliquot and store at -20C to -80C. Avoid repeated freezing and thawing cycles.

## BACKGROUND

---

### Description

Prolactin, also known as prl, is a hormone synthesized and secreted by lactotrope cells in the adenohypophysis (anterior pituitary gland). Prolactin has many effects, the most significant of which is to stimulate the mammary glands to produce milk (lactation). Increased serum prolactin during pregnancy causes enlargement of the mammary glands of the breasts and increases the production of milk. Recently, prolactin has demonstrated

# Recombinant mouse Prolactin protein

Catalog Number: ATGP3777

broader roles in breast cancer development, regulation of reproductive function, and immuno-regulation. Recombinant mouse Prolactin, fused to His-tag at N-terminus, was expressed in E. coli and purified by using conventional chromatography techniques.

## Amino acid Sequence

<MGSSHHHHHH SSGLVPRGSH MGS>QPLPICS AGDCQTSLRE LFDRVVILSH YIHTLYTDMF IEFDKQYVQD REFMVKVIND  
CPTSSLATPE DKEQALKVPP EVLLNLILSL VQSSSDPLFQ LITGVGGIQE APEYILSRK EIEEQNKQLL EGVEKIISQA  
YPEAKNGIY FVWSQLPSLQ GVDEESKILS LRNTIRCLRR DSHKVDNFLK VLRCQIAHQN NC

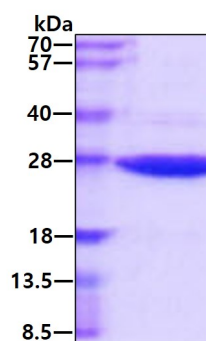
## General References

Suzuki MF., et al. (2012) Biotechnol Appl Biochem. 59(3):178-85

Goffin V., et al. (1999) Mol Cell Endocrinol. 151(1-2):79-87.

## DATA

### SDS-PAGE



3ug by SDS-PAGE under reducing condition and visualized by coomassie blue stain.