

Recombinant human Ephrin-A1 protein

Catalog Number: ATGP3782

PRODUCT INFORMATION

Expression system

Baculovirus

Domain

19-182aa

UniProt No.

P20827

NCBI Accession No.

NP_004419.1

Alternative Names

ephrin A1, EFNA1, EPH-related receptor tyrosine kinase ligand 1, LERK-1, Immediate early response protein B61, Tumor necrosis factor alpha-induced protein 4, TNF alpha-induced protein 4, gastric cancer metastasis associated long noncoding RNA, EPLG1, LERK1, TNFAIP4, ECKLG, GMAN

PRODUCT SPECIFICATION

Molecular Weight

46.6 kDa (406aa)

Concentration

0.5mg/ml (determined by absorbance at 280nm)

Formulation

Liquid in. Phosphate-Buffered Saline (pH 7.4) containing 10% glycerol

Purity

> 90% by SDS-PAGE

Endotoxin level

< 1 EU per 1ug of protein (determined by LAL method)

Biological Activity

Measured by its binding ability in a functional ELISA with Human EPHA2 (CAT# ATGP3378). The ED50 range \leq 50 ng/ml.

Tag

hIgG-His-Tag

Application

SDS-PAGE, Bioactivity

Storage Condition

Can be stored at +2C to +8C for 1 week. For long term storage, aliquot and store at -20C to -80C. Avoid repeated freezing and thawing cycles.

Recombinant human Ephrin-A1 protein

Catalog Number: ATGP3782

BACKGROUND

Description

EFNA1, also known as ephrin-A1 isoform a, is a member of the Ephrin-A family of GPI-anchored ligands. The Ephrin family receptor interacting proteins serve as the ligands of the Ephrin receptor, which compose the largest known subfamily of receptor protein-tyrosine kinases. This protein contains on ephrin RBD (ephrin receptor-binding) domain. It is widely expressed on endothelial and epithelial a cells, particularly in the lung, intestine, liver, and skin. Also, this protein is expressed on resting CD4+ T cells inhibits cell proliferation and activation although soluble protein can promote T cell chemotaxis. Recombinant human EFNA1, fused to hlgG-His-tag at C-terminus, was expressed in insect cell and purified by using conventional chromatography techniques.

Amino acid Sequence

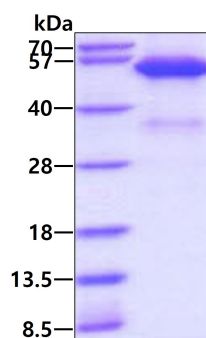
```
<ADP>DRHTVFW NSSNPKFRNE DYTIVQLND YVDIICPHYE DHSVADAAME QYILYLVEHE EYQLCQPQSK
DQVRWQCNRP SAKHGPEKLS EKQRFTPFT LGKEFKEGHS YYYISKPIHQ HEDRCLRLKV TVSGKITHSP QAHVNPQEKR
LAADDPEVRV LHSIGHS<LEP KSCDKTHTCP PCPAPELLGG PSVFLFPPKP KDTLMISRTP EVTCVVVDVS HEDPEVKFNW
YVDGVEVHNA KTKPREEQYN STYRVVSVLT VLNQDNLNGK EYKCKVSNKA LPAPIEKTIS KAKGQPREPQ VYTLPPSRDE
LTKNQVSLTC LVKGFYPSDI AVEWESNGQP ENNYKTTTPV LSDSGSFFLY SKLTVDKSRW QQGNVFSCSV MHEALHNHYT
QKSLSLSPGK HHHHHH>
```

General References

Beckmann MP., et al, (1994) EMBO J. 13:3757-3762.
 Hasmim M., et al, (2013) BMC Cancer 13:592-604.

DATA

SDS-PAGE



3ug by SDS-PAGE under reducing condition and visualized by coomassie blue stain

Biological Activity

Recombinant human Ephrin-A1 protein

Catalog Number: ATGP3782

Human EPHA2 (CAT# ATGP3378) is coated at 2 ug/ml (100 ul/well) can bind Human Ephrin-A1. The ED50 range \leq 50 ng/ml.

