

Recombinant mouse Prolactin protein

Catalog Number: ATGP3793

PRODUCT INFORMATION

Expression system

E.coli

Domain

30-228aa

UniProt No.

Q9CPQ2

NCBI Accession No.

NP_035294

Alternative Names

Prolactin isoform 1, AV290867, Gha1, Prl1a1

PRODUCT SPECIFICATION

Molecular Weight

22.7 kDa (200aa) confirmed by MALDI-TOF

Concentration

1mg/ml (determined by absorbance at 280nm)

Formulation

Liquid in. Phosphate-Buffered Saline (pH 7.4)

Purity

> 90% by SDS-PAGE

Endotoxin level

< 1 EU per 1ug of protein (determined by LAL method)

Biological Activity

Measured in a cell proliferation assay using Nb2-11 rat lymphoma cells. The ED50 range \leq 3ng/ml.

Tag

Non-Tagged

Application

SDS-PAGE, Bioactivity

Storage Condition

Can be stored at +2C to +8C for 1 week. For long term storage, aliquot and store at -20C to -80C. Avoid repeated freezing and thawing cycles.

BACKGROUND

Description

Prolactin, also known as prl, is a hormone synthesized and secreted by lactotrope cells in the adenohypophysis

Recombinant mouse Prolactin protein

Catalog Number: ATGP3793

(anterior pituitary gland). Prolactin has many effects, the most significant of which is to stimulate the mammary glands to produce milk (lactation). Increased serum prolactin during pregnancy causes enlargement of the mammary glands of the breasts and increases the production of milk. Recently, prolactin has demonstrated broader roles in breast cancer development, regulation of reproductive function, and immuno-regulation. Recombinant mouse Prolactin, was expressed in *E. coli* and purified by using conventional chromatography techniques.

Amino acid Sequence

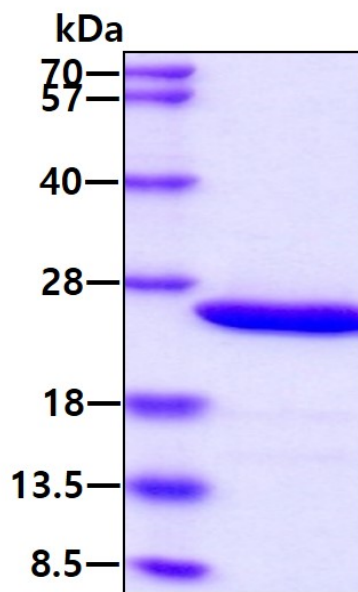
MQPLPICSAG DCQTSRLREL DRVVILSHYI HTLYTDMFIE FDKQYVQDRE FMVKVINDCP TSSLATPEDK EQALKVPPEV
LLNLILSLVQ SSSDPLFQLI TGVGGIQEAP EYILSRAKEI EEQNKQLLEG VEKIISQAYP EAKGNIGIYFV WSQLPSLQGV
DEESKILSLR NTIRCLRRDS HKVDNFLKVL RCQIAHQNNC

General References

Suzuki MF., et al. (2012) *Biotechnol Appl Biochem.* 59(3):178-85
Goffin V., et al. (1999) *Mol Cell Endocrinol.* 151(1-2):79-87.

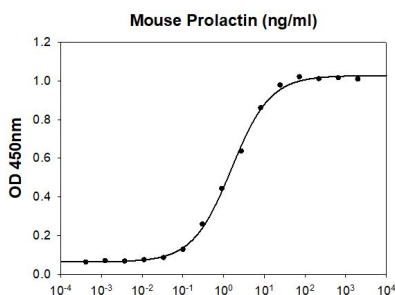
DATA

SDS-PAGE



3µg by SDS-PAGE under reducing condition and visualized by coomassie blue stain.

Biological Activity



Mouse Prolactin stimulates cell proliferation of the Nb2-11 rat lymphoma cells. The ED50 range ≤ 3 ng/ml.