

Recombinant rat IGF-1 protein

Catalog Number: ATGP3840

PRODUCT INFORMATION

Expression system

E.coli

Domain

49-118aa

UniProt No.

P08025

NCBI Accession No.

NP_001075948

Alternative Names

Insulin-like growth factor I isoform d, IGF, IGF-I, Somatomedin

PRODUCT SPECIFICATION

Molecular Weight

7.8 kDa (71aa) confirmed by MALDI-TOF

Concentration

0.5mg/ml (determined by absorbance at 280nm)

Formulation

Liquid in. Phosphate-Buffered Saline (pH 7.4) containing 10% glycerol

Purity

> 95% by SDS-PAGE

Endotoxin level

< 1 EU per 1ug of protein (determined by LAL method)

Tag

Non-Tagged

Application

SDS-PAGE

Storage Condition

Can be stored at +2C to +8C for 1 week. For long term storage, aliquot and store at -20C to -80C. Avoid repeated freezing and thawing cycles.

BACKGROUND

Description

IGF-1, also known as Insulin-like growth factor I isoform d, is mitogenic polypeptide growth factors that stimulate the proliferation and survival of various cell types including muscle, bone, and cartilage tissue in vitro. IGF-1 is predominantly produced by the liver, although a variety of tissues produce the IGFs at distinctive times. The IGF-1 belongs to the insulin gene family, which also contains insulin and relaxin. The IGF-1 is similar by structure and

Recombinant rat IGF-1 protein

Catalog Number: ATGP3840

function to insulin, but has a much higher growth-promoting activity than insulin. Recombinant rat IGF-1 protein, was expressed in *E. coli* and purified by using conventional chromatography

Amino acid Sequence

MGPETLCGAE LVDALQFVCG PRGFYFNKPT GYGSSIRRAP QTGIVDECCF RSCDLRRLEM YCAPLKPTKS A

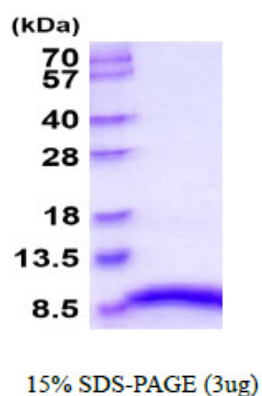
General References

Zumstein P., et al. (1987) *J Biol Chem.* 262(33): 11252-60.

Rabinovsky ED., et al. (2004) *Neurol Res.* 26(2): 204-10.

DATA

SDS-PAGE



3ug by SDS-PAGE under reducing condition and visualized by coomassie blue stain.