

Recombinant human IL-15 protein

Catalog Number: ATGP3844

PRODUCT INFORMATION

Expression system

E.coli

Domain

49-162 aa

UniProt No.

P40933

NCBI Accession No.

NP_751914.1

Alternative Names

Interleukin-15

PRODUCT SPECIFICATION

Molecular Weight

13.9 kDa (123aa) confirmed by MALDI-TOF

Concentration

1mg/ml (determined by Bradford assay)

Formulation

Liquid in. Phosphate-Buffered Saline (pH 7.4) containing 10% glycerol

Purity

> 95% by SDS-PAGE

Endotoxin level

< 1 EU per 1ug of protein (determined by LAL method)

Biological Activity

Measured in a cell proliferation assay using CTLL2 mouse cytotoxic T cells. The ED50 range \leq 1ng/ml.

Tag

His-Tag

Application

SDS-PAGE, Bioactivity

Storage Condition

Can be stored at +2C to +8C for 1 week. For long term storage, aliquot and store at -20C to -80C. Avoid repeated freezing and thawing cycles.

BACKGROUND

Description

Interleukin (IL) -15 is a pleiotropic cytokine that plays a pivotal role in both innate and adaptive immunity. IL-15

Recombinant human IL-15 protein

Catalog Number: ATGP3844

is unique among cytokines due to its participation in a trans signaling mechanism in which IL-15 receptor alpha (IL-15R alpha) from one subset of cells presents IL-15 to neighboring IL-2R beta/gamma (c) -expressing cells. This newly discovered cytokine is produced by a wide variety of cells and tissues and like IL-2, stimulates the proliferation of T-lymphocytes and induces the generation of cytotoxic T-lymphocytes (CTLs) and lymphokine-activated killer (LAK) cells. Recombinant human IL-15 was expressed in E. coli and purified by using conventional chromatography after refolding of the isolated inclusion bodies in a redox buffer.

Amino acid Sequence

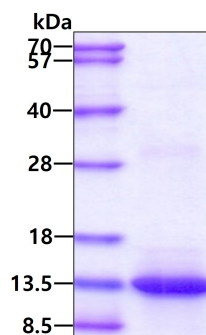
MNWWNVISDL KKIEDLIQSM HIDATLYTES DVHPSCKVTA MKCFLELQV ISLESGDASI HDTVENLIIL ANNSLSSNGN VTESGCKECELEEKNIKEF LQSFVHIVQM FINTS<LEHHH HHH>

General References

J G Giri., et al. (1994) EMBO. 13(12): 2822-2830.
Lorenzen I., et al. (2006). J Biol Chem. 281(10):6642-7

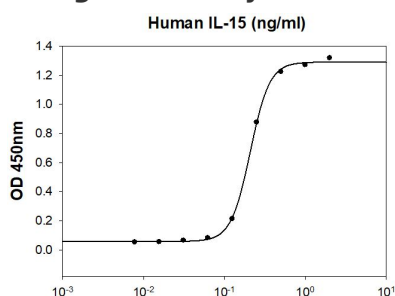
DATA

SDS-PAGE



3ug by SDS-PAGE under reducing condition and visualized by coomassie blue stain.

Biological Activity



Human IL-15 stimulates cell proliferation of the CTLL2 mouse cytotoxic T cells. The ED50 range ≤ 1 ng/ml.