

Recombinant mouse B7-H3 protein

Catalog Number: ATGP3890

PRODUCT INFORMATION

Expression system

Baculovirus

Domain

29-248aa

UniProt No.

Q8VE98

NCBI Accession No.

NP_598744

Alternative Names

CD276 antigen, Cd276, 6030411F23Rik, AU016588, B7h3, B7RP-2, B7 homolog 3, B7-H3

PRODUCT SPECIFICATION

Molecular Weight

24.7 kDa (226aa)

Concentration

0.25mg/ml (determined by absorbance at 280nm)

Formulation

Liquid in. Phosphate-Buffered Saline (pH 7.4) containing 10% glycerol

Purity

> 90% by SDS-PAGE

Endotoxin level

< 1 EU per 1ug of protein (determined by LAL method)

Tag

His-Tag

Application

SDS-PAGE

Storage Condition

Can be stored at +2C to +8C for 1 week. For long term storage, aliquot and store at -20C to -80C. Avoid repeated freezing and thawing cycles.

BACKGROUND

Description

B7H3, also known as CD276 antigen, is a member of the B7 family of immune regulatory ligands that is thought to attenuate peripheral immune responses through co-inhibition. It modulates T-cell-mediated immune responses and the development of acute and chronic transplant rejection. This protein plays a positive regulatory role in bone formation and has a dual role in the bone-immune interface. It induces antitumor

Recombinant mouse B7-H3 protein

Catalog Number: ATGP3890

immunity as it activates both acquired and innate immunity leading to natural killer cell and CD8 T-cell dependent killing of tumor cells. Recombinant mouse B7H3, fused to His-tag at C-terminus, was expressed in insect cell and purified by using conventional chromatography techniques.

Amino acid Sequence

VEVQVSEDPV VALVDTDATL RCSFSPEPGF SLAQLNLIWQ LTDTKQLVHS FTEGRDQGSA YSNRTALFPD LLVQGNASLR LQRVVRTDEG SYTCFVSIQD FDSAAVSLQV AAPYSKPSMT LEPNKDLRPG NMVTITCSSY QGYPEAEVFW KDGQGVPLTG NVTTSQMANE RGLFDVHSV LRVVLGANGTY SCLVRNPVLQ QDAHGSVTIT GQPLTFPPEA <HHHHHH>

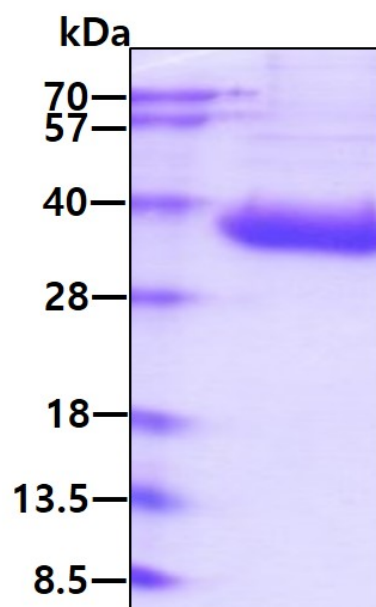
General References

Wang Z., et al. (2018) Cancer Sci. 109:2697-2705.

Son Y., et al. (2019) Stem Cells. 37:382-394.

DATA

SDS-PAGE



3ug by SDS-PAGE under reducing condition and visualized by coomassie blue stain.