

Recombinant human CD8 alpha protein

Catalog Number: ATGP3901

PRODUCT INFORMATION

Expression system

Baculovirus

Domain

22-182aa

UniProt No.

P01732

NCBI Accession No.

NP_001759

Alternative Names

CD8A, T-cell surface glycoprotein CD8 alpha chain, T-lymphocyte differentiation antigen T8/Leu-2, CD8a, MAL, CD8, Leu2, p32, T-cell surface glycoprotein CD8 alpha chain isoform 1

PRODUCT SPECIFICATION

Molecular Weight

18.7 kDa (170aa)

Concentration

0.5mg/ml (determined by absorbance at 280nm)

Formulation

Liquid in. Phosphate-Buffered Saline (pH 7.4) containing 10% glycerol

Purity

> 95% by SDS-PAGE

Endotoxin level

< 1 EU per 1ug of protein (determined by LAL method)

Tag

His-Tag

Application

SDS-PAGE

Storage Condition

Can be stored at +2C to +8C for 1 week. For long term storage, aliquot and store at -20C to -80C. Avoid repeated freezing and thawing cycles.

BACKGROUND

Description

CD8 alpha, also known as T-cell surface glycoprotein CD8 alpha chain isoform 1, is a member of integral membrane glycoprotein that plays an essential role in the immune response and serves multiple functions in responses. It interacts with the T-cell receptor and the MHC class I proteins presented by antigen

Recombinant human CD8 alpha protein

Catalog Number: ATGP3901

presenting cells. Homodimers of this protein at the cell surface provides a survival mechanism allowing conjugation and lysis of multiple target cells in NK-cells. Recombinant human CD8 alpha, fused to His-tag at C-terminus, was expressed in insect cell and purified by using conventional chromatography techniques.

Amino acid Sequence

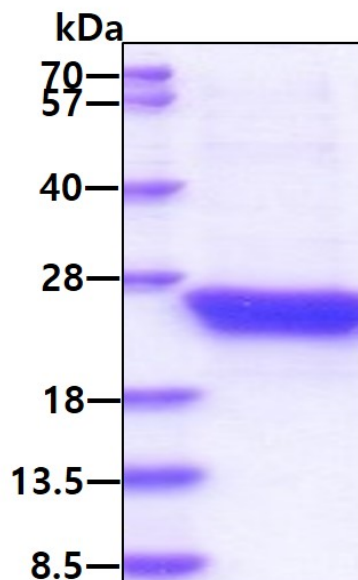
<ADP>SQFRVSP LDRTWNLGET VELKCQVLLS NPTSGCSWLF QPRGAAASPT FLLYLSQNKPK KAAEGLDTQR
FSGKRLGDTF VLTLSDFRRE NEGYYFCSAL SNSIMYFSHF VPVFLPAKPT TTPAPRPPTP APTIASQPLS LRPEACRPAA
GGAVHTRGLD FACD<HHHHHH>

General References

Harland KL., et al. (2014) Nat Commun. 5:3547.
Chen S., et al. (2019) J Cancer. 10:697-707.

DATA

SDS-PAGE



3ug by SDS-PAGE under reducing condition and visualized by coomassie blue stain.