

Recombinant human ICAM-3/CD50 protein

Catalog Number: ATGP3931

PRODUCT INFORMATION

Expression system

Baculovirus

Domain

30-485aa

UniProt No.

P32942

NCBI Accession No.

NP_002153.2

Alternative Names

ICAM3, Intercellular adhesion molecule 3, ICAM-3, CD50, CDW50, ICAM-R, intercellular adhesion molecule 3 isoform 1

PRODUCT SPECIFICATION

Molecular Weight

76.7 kDa (698aa)

Concentration

0.25mg/ml (determined by Bradford assay)

Formulation

Liquid in. Phosphate-Buffered Saline (pH 7.4) containing 10% glycerol

Purity

> 90% by SDS-PAGE

Endotoxin level

< 1 EU per 1ug of protein (determined by LAL method)

Biological Activity

Measured by the ability of the immobilized protein to support the adhesion of HL-60 human promyelocytic cells. When cells are added to Human ICAM-3/CD50 coated plates, the ED50 range $\leq 4\mu\text{g/ml}$.

Tag

hIgG-His-Tag

Application

SDS-PAGE, Bioactivity

Storage Condition

Can be stored at +2C to +8C for 1 week. For long term storage, aliquot and store at -20C to -80C. Avoid repeated freezing and thawing cycles.

Recombinant human ICAM-3/CD50 protein

Catalog Number: ATGP3931

BACKGROUND

Description

ICAM-3/CD50, also known as CD50 (Cluster of Differentiation 50), is a member of the intercellular adhesion molecule (ICAM) family. All ICAM proteins are type I transmembrane glycoproteins, contain 2-9 immunoglobulin-like C2-type domains, and bind to the leukocyte adhesion LFA-1 protein. This protein is constitutively and abundantly expressed by all leukocytes and may be the most important ligand for LFA-1 in the initiation of the immune response. It functions not only as an adhesion molecule, but also as a potent signaling molecule. Recombinant human ICAM-3/CD50, fused hlgG-His-tag at C-terminus, was expressed in insect cell and purified by using conventional chromatography techniques.

Amino acid Sequence

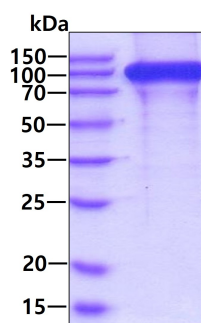
```
<ADL>QEFLLRV EPQNPVLSAG GSLFVNCSTD CPSSEKIALE TSLSKELVAS GMGWAAFNLS NVTGNSRILC SVYCNGSQIT
GSSNITVYRL PERVELAPLP PWQPVGQNFT LRCQVEDGSP RTSLTVVLLR WEEELSRQPA VEEPAEVTAT VLASRDDHGA
PFSCRTELDM QPQGLGLFVN TSAPRQLRTF VLPVTPPRLV APRFLEVETS WPVDCTLDGL FPASEAQVYL ALGDQMLNAT
VMNHGDTLTA TATATARADQ EGAREIVCNV TLGGERREAR ENLTVFSFLG PIVNLSEPTA HEGSTVTVSC MAGARVQVTL
DGVPAAAPGQ PAQLQLNATE SDDGRSFFCS ATLEVDGEFL HRNSSVQLRV LYGPKIDRAT CPQHLKWKDK TRHVLQCQAR
GNYPPELRCL KEGSSREVPV GIPFFVNVTH NGTYQCQASS SRGKYTLVVV MDIEAGSSH<V EPKSCDKTHT CPPCPAPELL
GGPSVFLFPP KPKDTLMISR TPEVTCVVVD VSHEDPEVKF NWYVDGVEVH NAKTKPREEQ YNSTYRVSV LTVLHQDWLN
GKEYKCKVSN KALPAIEKT ISKAKGQPRE PQVYTLPPSR DELTKNQVSL TCLVKGFYPS DIAVEWESNG QPENNYKTP
PVLDSGDSFF LYSKLTVDKS RWQQGNVFSC SVMHEALHNNH YTQKSLSLSP GKHHHHHHH>
```

General References

de Fougérolles AR., et al, (1992) J Exp Med. 175:185-190.
 Serrador JM., et al, (1997) J Cell Biol. 138:1409-1423.

DATA

SDS-PAGE

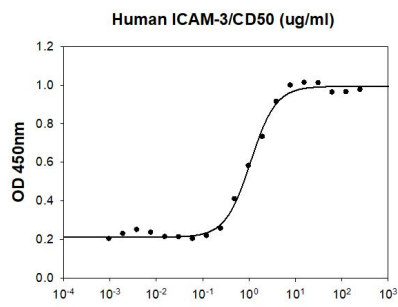


3ug by SDS-PAGE under reducing condition and visualized by coomassie blue stain.

Biological Activity

Recombinant human ICAM-3/CD50 protein

Catalog Number: ATGP3931



Human ICAM-3/CD50 stimulates cell adhesion of the HL-60 human promyelocytic cells. The ED50 range ≤ 4 ug/ml.