

Recombinant human GDNF protein

Catalog Number: ATGP3942

PRODUCT INFORMATION

Expression system

Baculovirus

Domain

109-211aa

UniProt No.

P39905

NCBI Accession No.

NP_000505.1

Alternative Names

Glial cell line-derived neurotrophic factor, hGDNF, Astrocyte-derived trophic factor, ATF, ATF1, ATF2, HFB1-GDNF, HSCR3

PRODUCT SPECIFICATION

Molecular Weight

12.8kDa (113aa)

Concentration

0.25mg/ml (determined by Absorbance at 280nm)

Formulation

Liquid in. Phosphate-Buffered Saline (pH 7.4) containing 10% glycerol.

Purity

> 90% by SDS-PAGE

Endotoxin level

< 1 EU per 1ug of protein (determined by LAL method)

Biological Activity

Measured by its binding ability in a functional ELISA with Human GFR alpha-1 (CAT# ATGP4154).

Tag

His-Tag

Application

SDS-PAGE, Bioactivity

Storage Condition

Can be stored at +2C to +8C for 1 week. For long term storage, aliquot and store at -20C to -80C. Avoid repeated freezing and thawing cycles.

BACKGROUND

Recombinant human GDNF protein

Catalog Number: ATGP3942

Description

GDNF, also known as Glial cell-derived neurotrophic factor, is a member of the GDNF family of ligands (GFL). This Protein has been found that GFLs play a role in a number of biological processes including cell survival, neurite outgrowth, cell differentiation and cell migration. It promotes the survival of many types of neurons and signals through GFRa receptors, particularly GFRa1. These neuronal populations die in the course of Parkinson's disease and amyotrophic lateral sclerosis (ALS). GDNF also regulates kidney development and spermatogenesis, and has a powerful and rapid negative (ameliorating) effect on alcohol consumption. Recombinant human GDNF, fused to His-tag at C-terminus, was expressed in insect cell and purified by using conventional chromatography techniques.

Amino acid Sequence

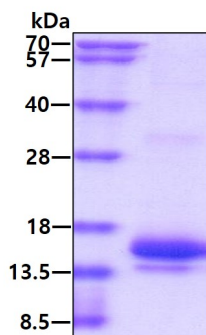
<ADPM>RGQRGK NRGCVLTAIH LNVTDLGLGY ETKEELIFRY CSGSCDAAET TYDKILKNLS RNRRLVSDKV GQACCRPIAF DDDLSFLDDN LVYHILRKHS AKRCGCI<HHH HHH>

General References

Lin LF., et al, (1993) Science. 260:1130-1132.
Carnicella S., et al, (2008) United States of America. 105: 8114-8119.

DATA

SDS-PAGE



3ug by SDS-PAGE under reducing condition and visualized by coomassie blue stain

Biological Activity

Human GDNF is coated at 0.5 ug/ml (100 ul/well) can bind Human GFR alpha-1 (CAT# ATGP4154) in a Functional ELISA assay.

