

Recombinant canine IL-1 beta/IL1B protein

Catalog Number: ATGP3956

PRODUCT INFORMATION

Expression system

E.coli

Domain

114-265aa

UniProt No.

Q2VCE2

NCBI Accession No.

NP_001033060.1

Alternative Names

Interleukin-1 beta, IL-1 beta

PRODUCT SPECIFICATION

Molecular Weight

17.5 kDa (153aa) confirmed by MALDI-TOF

Concentration

1mg/ml (determined by absorbance at 280nm)

Formulation

Liquid in. Phosphate-Buffered Saline (pH 7.4)

Purity

> 95% by SDS-PAGE

Endotoxin level

< 1 EU per 1ug of protein (determined by LAL method)

Biological Activity

Measured in a cell proliferation assay using D10.G4.1 mouse helper T cells. The ED50 range \leq 5pg/ml.

Tag

Non-Tagged

Application

SDS-PAGE, Bioactivity

Storage Condition

Can be stored at +2C to +8C for 1 week. For long term storage, aliquot and store at -20C to -80C. Avoid repeated freezing and thawing cycles.

BACKGROUND

Description

Interleukin-1 (IL-1) has been considered a potentially important inflammatory mediator. It is composed of two

Recombinant canine IL-1 beta/IL1B protein

Catalog Number: ATGP3956

distinct proteins, called as IL-1alpha and IL-1beta. IL-1beta is a proinflammatory cytokine produced in a variety of cells including monocytes, tissue macrophages, keratinocytes and other epithelial cells. Both IL-1alpha and IL-1beta bind to the same receptor and they are structurally related polypeptides that share approximately 20% amino acid. Recombinant canine IL-1beta was expressed in *E. coli* and purified by using conventional chromatography techniques.

Amino acid Sequence

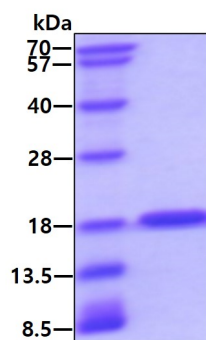
MAAMQSV DCK LQDISHKYL VLSNSYELRAL HLNGENVNKQ VVFHMSFVHG DESNNKIPVV LGIKQKNLYL SCVMKDGKPT LQLEKVDPKV YPKRKMEKRF VFNKIEIKNT VEFESSQYPN WYISTSQVEG MPVFLGNTRG GQDITDFTME FSS

General References

Allan SM., et al. (2005), *Nat. Rev. Immunol.* 5:629
 Curr Pharm Des. (2017), 23(32):4893-4905.

DATA

SDS-PAGE



3ug by SDS-PAGE under reducing condition and visualized by coomassie blue stain.

Biological Activity

Canine IL-1B stimulates cell proliferation of the D10.G4.1 mouse helper T cells. The ED50 range range ≤ 5 pg/ml.

