

Recombinant human IL-17E/IL-25 protein

Catalog Number: ATGP4018

PRODUCT INFORMATION

Expression system

HEK293

Domain

33-177aa

UniProt No.

Q9H293

NCBI Accession No.

NP_073626.1

Alternative Names

interleukin-25 isoform 1, interleukin 25, IL17E, IL-17E, IL25, IL-25, interleukin-17E, interleukin-25, Macrophagleukin-25 isoform 2

PRODUCT SPECIFICATION

Molecular Weight

17.8kDa (154aa)

Concentration

0.5mg/ml (determined by Absorbance at 280nm)

Formulation

Liquid. In Phosphate-Buffered Saline (pH 7.4) containing 20% glycerol

Purity

> 95% by SDS - PAGE

Endotoxin level

< 1 EU per 1ug of protein (determined by LAL method)

Biological Activity

Measured by its binding ability in a functional ELISA with Human IL-17 RB (CAT# ATGP4039)

Tag

His-Tag

Application

SDS-PAGE, Bioactivity

Storage Condition

Can be stored at +2C to +8C for 1 week. For long term storage, aliquot and store at -20C to -80C. Avoid repeated freezing and thawing cycles.

BACKGROUND

Recombinant human IL-17E/IL-25 protein

Catalog Number: ATGP4018

Description

IL-25, also known as IL-17E, belongs to the IL-17 cytokine family. It support the Th2 immune response, and has been shown to induce the production of IL-4, IL-5 and IL-13. This is in contrast to other IL-17 family members which promote Th1- and Th17-biased inflammation. Because IL-25 promotes the development of a Th2 immune response, it acts to protect against several bowel infections caused by helminths. It is also referred to as the regulator of IL-9 production. IL-25 has been shown to increase the production of IL-9 in Th9 cells. Another function of this protein is the activation of natural lymphoid cells. IL-25 and IL-33 are the most potent activators of ILC2. IL-25 has potent antitumor activity in vivo in several human cancers including melanoma, breast, lung, colon, and pancreatic cancers, suggesting the potential clinical use of IL-17E as an anticancer agent. Recombinant human IL-17E/IL-25, fused to His-tag at C-terminus, was expressed in HEK293 cell and purified by using conventional chromatography techniques.

Amino acid Sequence

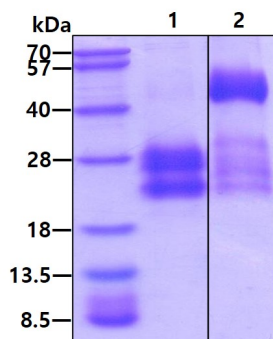
<DGS>YSHWPSC CPSKGQDTSE ELLRWSTVPV PPLEPARPNR HPESCRASED GPLNSRAISP WRYELDRDLN
RLPQDLYHAR CLCPHCVSLQ TGSMDPRGN SELLYHNQTV FYRRPCHGEK GTHKGYCLER RLYRVSLACV
CVRPRVMG<HH HHHH>

General References

Xinyang Song., et al, (2013) Cell Signal. 25:2335-2347.
Rickel EA., et al, (2008) J Immunol. 181:4299-4310.

DATA

SDS-PAGE



3ug by SDS-PAGE under reducing condition and visualized by coomassie blue stain
Lane 1 : reducing condition
Lane 2 : non-reducing condition

Biological Activity

Recombinant human IL-17E/IL-25 protein

Catalog Number: ATGP4018

Human IL-17E/IL-25 is coated at 2 ug/ml (100 ul/well) can bind Human IL-17 RB (CAT# ATGP4039) in a Functional ELISA assay.

