

Recombinant mouse CTLA4 protein

Catalog Number: ATGP4046

PRODUCT INFORMATION

Expression system

Baculovirus

Domain

38-161aa

UniProt No.

P09793

NCBI Accession No.

NP_033973.2

Alternative Names

Ly-56, Ly-5, Cytotoxic T-lymphocyte-associated antigen 4, Cytotoxic T-lymphocyte protein 4 isoform 1, Ctl α -4, CTLA4, CTLA, Cd152

PRODUCT SPECIFICATION

Molecular Weight

40.6kDa (363aa)

Concentration

0.5mg/ml (determined by Absorbance at 280nm)

Formulation

Liquid. In Phosphate-Buffered Saline (pH 7.4) containing 10% glycerol

Purity

> 90% by SDS - PAGE

Endotoxin level

< 1 EU per 1 μ g of protein (determined by LAL method)

Biological Activity

The activity is determined by the IL-2 ELISA in a using stimulated Jurkat human acute T cell leukemia cells with Human B7-1/CD80. The ED50 range \leq 150ng/ml.

Tag

hIgG-His-Tag

Application

SDS-PAGE, Bioactivity

Storage Condition

Can be stored at +2C to +8C for 1 week. For long term storage, aliquot and store at -20C to -80C. Avoid repeated freezing and thawing cycles.

Recombinant mouse CTLA4 protein

Catalog Number: ATGP4046

BACKGROUND

Description

Ctla-4, also known as cytotoxic T-lymphocyte protein 4 isoform 1, is a type 1 membrane protein and a member of the immunoglobulin-superfamily. Besides, this protein contains an extra cellular domain, a transmembranedomain and a cytoplasmic tail. It is generally expressed with highest levels in lymphoid tissues. Also, it is similar to T-cell costimulatory protein CD28 since both of the molecules bind to CD80 and CD86 on antigen-presenting cells. CTLA4 and CD28 effectively regulate T cell responses as opposing signals transmitted through two related cell-surface receptors. Recombinant mouse Ctla-4, fused to hlgG-His-tag at C-terminus, was expressed in insect cell and purified by using conventional chromatography techniques.

Amino acid Sequence

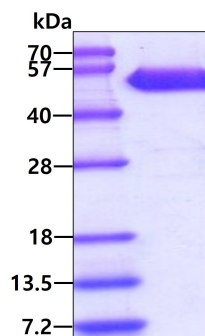
IQVTQPSVVL ASSHGVASFP CEYSPSHNTD EVRVTVLRQT NDQMTEVCAT TFTEKNTVGF LDYPFCSGTF NESRVNLTIQ GLRAVDTGLY LCKVELMYPP PYFVGMGNGT QIYVIDPEPC PDS<LEPKSC DKTHTCPPCP APELLGGPSV FLFPPKPKDT LMISRTPEVT CVVVDVSHED PEVKFNWYVD GVEVHNAKTK PREEQYNSTY RVVSVLTVLH QDWLNGKEYK CKVSNKALPA PIEKTISKAK GQPREPQVYT LPPSRDELTK NQVSLTCLVK GFYPSDIAVE WESNGQPENN YKTTTPVLDS DGSFFLYSKL TVDKSRWQQG NVFSCSV MHE ALHNHYTQKS LSLSPGKHHH HHH>

General References

- Krummey SM., et al. (2014) J. Immunol. 192:2495-2504.
- Jain N., et al. (2013) Nat. Med. 19:1632-1637.
- Yu CR., et al. (2013) J. Immunol. 191:5036-5043.

DATA

SDS-PAGE



3ug by SDS-PAGE under reducing condition and visualized by coomassie blue stain

Biological Activity

Recombinant mouse CTLA4 protein

Catalog Number: ATGP4046

Mouse Ctl4 inhibits IL-2 secretion of the stimulated Jurkat human acute T cell leukemia cells with Human B7-1/CD80. The ED50 range ≤ 150 ng/ml.

