

# Recombinant human CENPM protein

Catalog Number: ATGP4075

## PRODUCT INFORMATION

---

### Expression system

E.coli

### Domain

1-180aa

### UniProt No.

Q9NSP4

### NCBI Accession No.

NP\_076958

### Alternative Names

Centromere protein M isoform a, bK250D10.2, C22orf18, CENP-M, PANE1

## PRODUCT SPECIFICATION

---

### Molecular Weight

22.1 kDa (203aa) confirmed by MALDI-TOF

### Concentration

0.25mg/ml (determined by Bradford assay)

### Formulation

Liquid in. 20mM Tris-HCl buffer (pH 8.0) containing 0.15M NaCl, 30% glycerol, 1mM DTT

### Purity

> 85% by SDS-PAGE

### Tag

His-Tag

### Application

SDS-PAGE

### Storage Condition

Can be stored at +2C to +8C for 1 week. For long term storage, aliquot and store at -20C to -80C. Avoid repeated freezing and thawing cycles.

## BACKGROUND

---

### Description

CENPM, also known as Centromere protein M is involved in centromere assembly and immune response. This protein is an inner protein of the kinetochore, the multi-protein complex that binds spindle microtubules to regulate chromosome segregation during cell division. It was originally identified as a gene highly expressed in b-catenin transformed mouse mammary tissue. CENPM protein, fused to His-tag at N-terminus, was expressed in E. coli and purified by using conventional chromatography techniques.

## Recombinant human CENPM protein

Catalog Number: ATGP4075

### Amino acid Sequence

<MGSSHHHHH SSGLVPRGSH MGS>MSVLRPL DKLPGLNTAT ILLVGTEDAL LQQLADSMK EDCASELKVH  
LAKSLPLSS VNRPRIDLIV FVNLHISKYS LQNTESLRH VDASFFLGKV CFLATGAGRE SHCSIHRHTV VKLAHTYQSP  
LLYCDLEVEG FRATMAQRLV RVLQICAGHV PGVSALNLLS LRSSEGPSL EDL

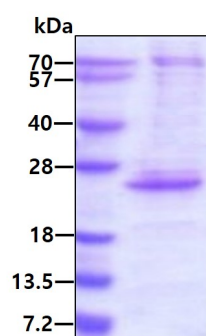
### General References

Brickner AG, Evans AM, et al. (2006). *Blood*. 107(9):3779-86.  
Bierie B, Edwin M, et al. (2004). *Gene Expr Patterns*. 4(4):389-95.

## DATA

---

### SDS-PAGE



3 $\mu$ g by SDS-PAGE under reducing condition and visualized by coomassie blue stain