

# Recombinant canine IL31 protein

Catalog Number: ATGP4105

## PRODUCT INFORMATION

---

### Expression system

HEK293

### Domain

24-159aa

### UniProt No.

C7G0W1

### NCBI Accession No.

NP\_001159386.1

### Alternative Names

IL31, IL-31, Interleukin-31, Interleukin 31, CANLF

## PRODUCT SPECIFICATION

---

### Molecular Weight

15.3 kDa (136aa)

### Concentration

1mg/ml (determined by Bradford assay)

### Formulation

Liquid in. Phosphate-Buffered Saline (pH 7.4) containing 10% glycerol

### Purity

> 90% by SDS-PAGE

### Endotoxin level

< 1 EU per 1ug of protein (determined by LAL method)

### Tag

Non-Tagged

### Application

SDS-PAGE

### Storage Condition

Can be stored at +2C to +8C for 1 week. For long term storage, aliquot and store at -20C to -80C. Avoid repeated freezing and thawing cycles.

## BACKGROUND

---

### Description

IL31, also known as interleukin-31, is a cytokine with an anti-parallel four-helix bundle structure in the gp130/IL-6 cytokine family. It shares several structural and functional characteristics with IL-6, Oncostatin M, LIF, and Cardiotrophin-1. This protein is mainly associated with activated T cells and is preferentially expressed by type 2 helper T cells (Th2). This protein is an inflammatory cytokine that helps trigger cell-mediated immunity against

# Recombinant canine IL31 protein

Catalog Number: ATGP4105

pathogens. It has also been identified as a major player in a number of chronic inflammatory diseases, including atopic dermatitis. Recombinant Canine IL31 was expressed in HEK293 cell and purified by using conventional chromatography techniques.

## Amino acid Sequence

SHMAPTHQLP PSDVRKIILE LQPLSRGLLE DYQKKETGVP ESNRTLILLCL TSDSQPPRLN SSAILPYFRA IRPLSDKNII  
DKIIEQLDKL KFHHEPETEI SVPADTFECK SFILTILQQF SACLESVFKS LNSGPQ

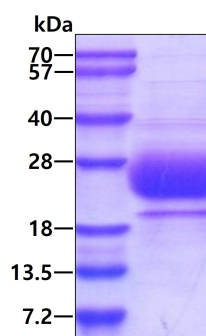
## General References

Dillon SR., et al, (2004) Nat. Immunol. 5:752-760.  
Diveu C., et al, (2004) Eur. Cytokine Netw. 15:291-302.

## DATA

---

### SDS-PAGE



3ug by SDS-PAGE under reducing condition and visualized by coomassie blue stain