

Recombinant human HLF protein

Catalog Number: ATGP4135

PRODUCT INFORMATION

Expression system

HEK293

Domain

1-295aa

UniProt No.

Q16534

NCBI Accession No.

NP_002117.1

Alternative Names

Hepatic leukemia factor, PAR bZIP transcription factor, E2A-HLF fusion transcript protein

Additional Information

ATGP1169 has been replaced with a catalog number ATGP4135.

PRODUCT SPECIFICATION

Molecular Weight

34kDa (301aa)

Concentration

0.5mg/ml (determined by Absorbance at 280nm)

Formulation

Liquid in. Phosphate-Buffered Saline (pH 7.4) containing 10% glycerol

Purity

> 95% by SDS-PAGE

Endotoxin level

< 1 EU per 1ug of protein (determined by LAL method)

Tag

His-Tag

Application

SDS-PAGE

Storage Condition

Can be stored at +2C to +8C for 1 week. For long term storage, aliquot and store at -20C to -80C. Avoid repeated freezing and thawing cycles.

BACKGROUND

Description

HLF, also known as hepatic leukemia factor, belongs to the bZIP family and the PAR (proline and acidic-rich)

Recombinant human HLF protein

Catalog Number: ATGP4135

subfamily of transcription regulatory proteins. HLF binds DNA specifically as a homodimer or heterodimer with other PAR factors. It is highly expressed in liver, with lower levels in lung and kidney and functions as a potent trans-activator. Recombinant human HLF protein, fused to His-tag at C-terminus, was expressed in HEK293 cell and purified by using conventional chromatography.

Amino acid Sequence

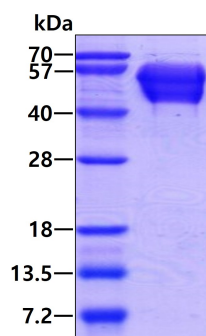
MEKMSRPLPL NPTFIPPPYG VLRSLLENPL KLPLHHEDAF SKDKDKEKKL DDESNSPTVP QSAFLGPTLW DKTLPYDGDG
FQLEYMDLEE FLSENGIPPS PSQHDHSPHP PGLQPASSAA PSVMDLSSRA SAPLHPGIPS PNCMQSPIRP GQLLPANRNT
PSPIDPDTIQ VPVGYEPDPA DLALSSIPGQ EMFDPRKRKF SEEELKPQPM IKKARKVFIP DDLKDDKYWA RRRKNNMAAK
RSRDARRLKE NQIAIRASFL EKENSALRQE VADLRKELGK CKNILAKYEA RHGPL<HHHHH H>

General References

Hunger S.P. et al. (1992) Genes Dev. 6: 1608-1620.
Falvey E. et al. (1995) EMBO J. 14: 4307-4317.

DATA

SDS-PAGE



3ug by SDS-PAGE under reducing condition and visualized by coomassie blue stain