

Human IL-15 antibody

Catalog Number: ATGA0603

PRODUCT INFORMATION

Catalog number

ATGA0603

Clone No.

AT7G9

Product type

Monoclonal antibody

UnitProt No.

P40933

NCBI Accession No.

NP_000576.1

Alternative Names

Interleukin-15, IL15

PRODUCT SPECIFICATION

Antibody Host

Mouse

Reacts With

Human

Concentration

1mg/ml

Formulation

Liquid in. Phosphate-Buffered Saline (pH 7.4) with 0.02% Sodium Azide, 10% Glycerol

Immunogen

Recombinant human IL-15 (49-162aa) purified from E. coli

Isotype

IgG2b kappa

Purification Note

By protein-A affinity chromatography

Application

ELISA, WB, ICC/IF, FACS

Usage

The antibody has been tested by ELISA, Western blot, ICC/IF and FACS analysis to assure specificity and reactivity. Since application varies, however, each investigation should be titrated by the reagent to obtain optimal results.

Human IL-15 antibody

Catalog Number: ATGA0603

Storage

Can be stored at +2C to +8C for 1 week. For long term storage, aliquot and store at -20C to -80C. Avoid repeated freezing and thawing cycles.

BACKGROUND

Description

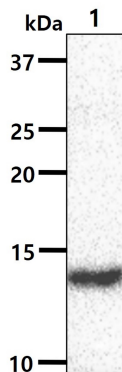
Interleukin-15 (IL-15) is a pleiotropic cytokine that plays a crucial role in both innate and adaptive immunity. IL-15 is unique among cytokines due to its involvement in a trans-signaling mechanism. In this process, IL-15 receptor alpha (IL-15R α) from one subset of cells presents IL-15 to neighboring cells that express IL-2R β/γ c. This cytokine is produced by a wide variety of cells and tissues. Similar to IL-2, IL-15 stimulates the proliferation of T-lymphocytes and induces the generation of cytotoxic T-lymphocytes (CTLs) and lymphokine-activated killer (LAK) cells.

General References

J G Giri., et al. (1994) EMBO. 13(12):2822-2830.
Lorenzen I., et al. (2006) J Biol Chem. 281(10):6642-6647.

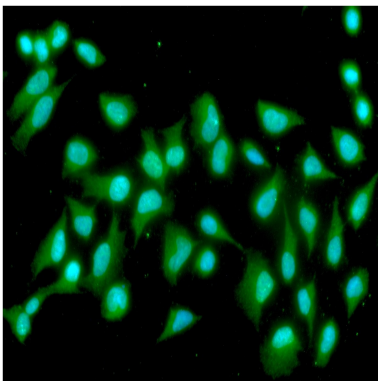
DATA

Western blot analysis (WB)



The recombinant protein (50ng) was resolved by SDS-PAGE, transferred to PVDF membrane and probed with anti-human IL-15 antibody (1:1000). Proteins were visualized using a goat anti-mouse secondary antibody conjugated to HRP and an ECL detection system. Lane 1.: Recombinant human IL-15 protein

Immunocytochemistry/Immunofluorescence (ICC/IF)



ICC/IF analysis of IL-15 in HeLa cells. The cell was stained with ATGA0603 (1:100). The secondary antibody (green) was used Alexa Fluor 488. DAPI was stained the cell nucleus (blue).

Flow cytometry (FACS)

Human IL-15 antibody

Catalog Number: ATGA0603

Flow cytometry analysis of IL-15 in PBMC cells. The cell was stained with ATGA0603 at 2-5ug for 1×10^6 cells (red). A Goat anti mouse IgG (Alexa fluor 488) was used as the secondary antibody. Mouse monoclonal IgG was used as the isotype control (dark gray), cells without incubation with primary and secondary antibody was used as the negative control (light gray).

