

Human TREM2 antibody

Catalog Number: ATGA0605

PRODUCT INFORMATION

Catalog number

ATGA0605

Clone No.

AT1E7

Product type

Monoclonal Antibody

UnitProt No.

Q9NZC2

NCBI Accession No.

NP_061838

Alternative Names

Ttriggering receptor expressed on myeloid cells 2 isoform 1, Triggering receptor expressed on myeloid cells 2, Triggering receptor expressed on myeloid cells 2a, TREM-2, Trem2a, Trem2b, Trem2c

Additional Information

ATR0917 has been replaced with a catalog number ATGP0605

PRODUCT SPECIFICATION

Antibody Host

Mouse

Reacts With

Human

Concentration

1mg/ml (determined by BCA assay)

Formulation

Liquid in. Phosphate-Buffered Saline (pH 7.4) with 0.02% Sodium Azide, 10% glycerol

Immunogen

Recombinant human TREM2 (19-161aa) purified from E. coli

Isotype

IgG1 kappa

Purification Note

By protein-A affinity chromatography

Application

ELISA, WB, ICC/IF, FACS

Usage

The antibody has been tested by ELISA, Western blot, ICC/IF and FACS analysis to assure specificity and

Human TREM2 antibody

Catalog Number: ATGA0605

reactivity. Since application varies, however, each investigation should be titrated by the reagent to obtain optimal results.

Storage

Can be stored at +2C to +8C for 1 week. For long term storage, aliquot and store at -20C to -80C. Avoid repeated freezing and thawing cycles.

BACKGROUND

Description

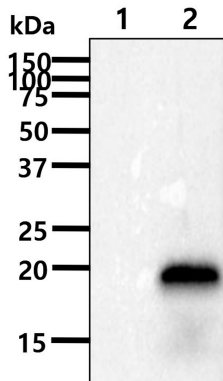
The triggering receptor expressed on myeloid cells-2 (TREM2) is a membrane protein that interacts with the TYROBP protein. The TREM2 and TYROBP proteins form a complex that transmits chemical signals to activate the cell. This complex is involved in the growth and development of several types of immune cells, particularly dendritic cells and activates these cells, triggering an inflammatory response to injury or disease. And the TYROBP-TREM2 complex also activates cells in the skeletal system and in the brain and spinal cord (central nervous system).

General References

N.Diaye EN, et al., (2009) J Cell Biol. 184(2):215-23.
Piccio L, et al., (2008) Brain. 131(11):3081-91.

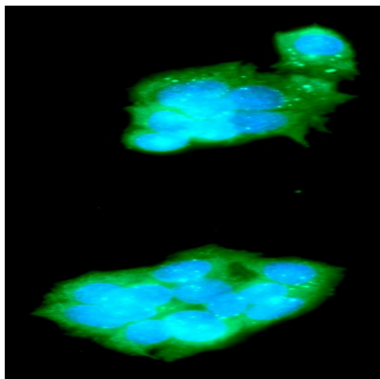
DATA

Western blot analysis (WB)



The cell lysates(40ug) were resolved by SDS-PAGE, transferred to PVDF membrane and probed with anti-human TREM2 antibody (1:1000). Proteins were visualized using a goat anti-mouse secondary antibody conjugated to HRP and an ECL detection system.
Lane 1 : 293T cell lysate
Lane 2 : TREM2 19-161aa Transfected 293T cell lysate

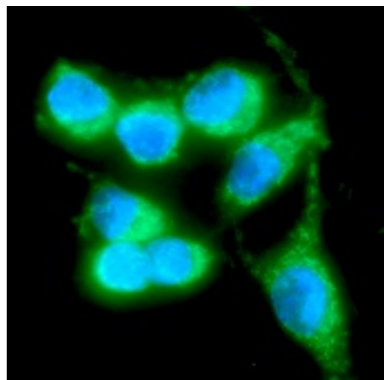
Immunocytochemistry/Immunofluorescence (ICC/IF)



ICC/IF analysis of TREM2 in HepG2 cells. The cell was stained with ATGA0605 (1:100). The secondary antibody (green) was used Alexa Fluor 488. DAPI was stained the cell nucleus (blue).

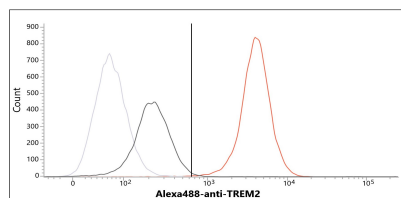
Human TREM2 antibody

Catalog Number: ATGA0605



ICC/IF analysis of TREM2 in Raw264.7 cells. The cell was stained with ATGA0605 (1:100). The secondary antibody (green) was used Alexa Fluor 488. DAPI was stained the cell nucleus (blue).

Flow cytometry (FACS)



Flow cytometry analysis of TREM2 in Hep3B cells. The cell was stained with ATGA0605 at 2-5ug for 1x10⁶ cells (red). A Goat anti mouse IgG (Alexa fluor 488) was used as the secondary antibody. Mouse monoclonal IgG was used as the isotype control (dark gray), cells without incubation with primary and secondary antibody was used as the negative control (light gray).